

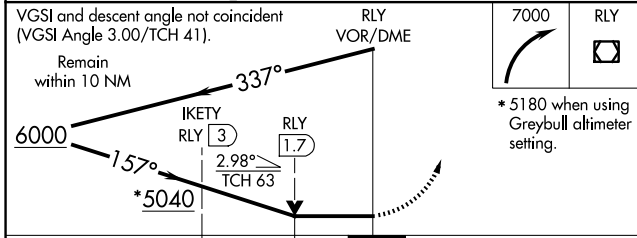
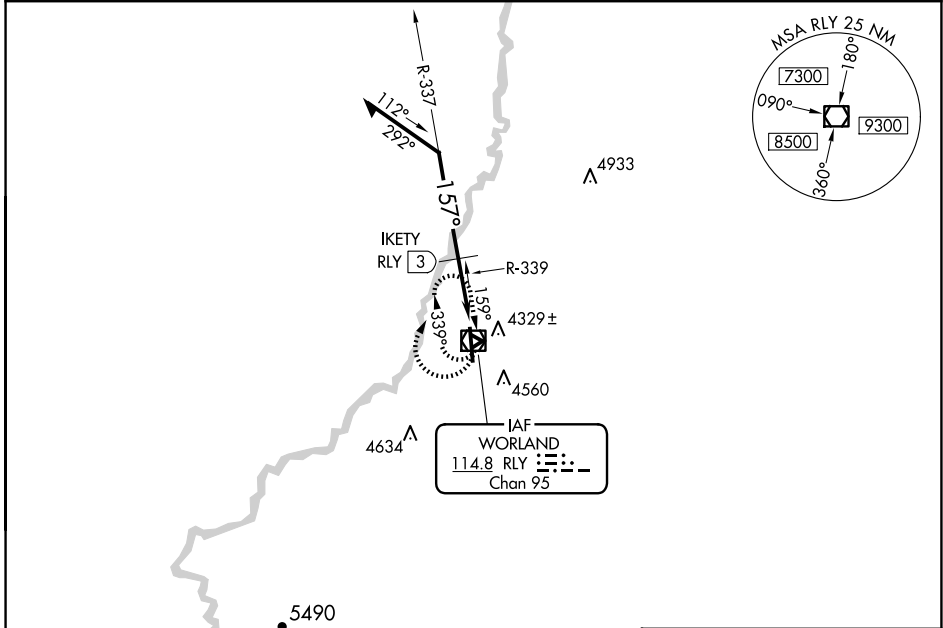
VOR/DME RLY <b>114.8</b> Chan <b>95</b>	APP CRS <b>157°</b>	Rwy Idg <b>7000</b> TDZE <b>4202</b> Apt Elev <b>4252</b>
---	------------------------	---

**VOR RWY 16**  
WORLAND MUNI (W.R.L)

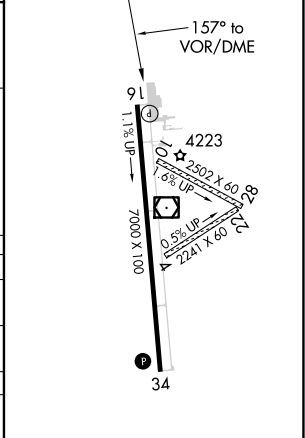
**⚠** When local altimeter setting not received, use Greybull altimeter setting: increase all MDAs 140 feet; all Cats, and Circling Cat C/D visibilities ½ SM. Helicopter visibility reduction below ¾ SM NA. VDP NA with Greybull altimeter setting.

**MISSED APPROACH:** Climbing right turn to 7000 in RLY VOR/DME holding pattern.

ASOS <b>135.475</b>	SALT LAKE CENTER <b>133.25 285.6</b>	UNICOM <b>123.05 (CTAF)</b>
------------------------	---	--------------------------------



ELEV 4252	<b>D</b> TDZE 4202
-----------	--------------------



CATEGORY	A	B	C	D
S-16	5040-1 838 (800-1)	5040-1¼ 838 (800-1¼)	5040-2½	838 (800-2½)
CIRCLING	5040-1 788 (800-1)	5040-1¼ 788 (800-1¼)	5040-2½	788 (800-2½)
<b>IKETY FIX MINIMUMS</b>				
S-16	4600-1	398 (400-1)	4600-1¼	398 (400-1¼)
CIRCLING	4920-1	668 (700-1)	4920-1¾ 668 (700-1¾)	5020-2½ 768 (800-2½)

REIL Rlys 16 and 34 **D**  
MIRL Rwy 16-34 **D**

NW-1, 19 FEB 2026 to 19 MAR 2026

NW-1, 19 FEB 2026 to 19 MAR 2026