

ANTHM FIVE ARRIVAL (RNAV) Transition Routes

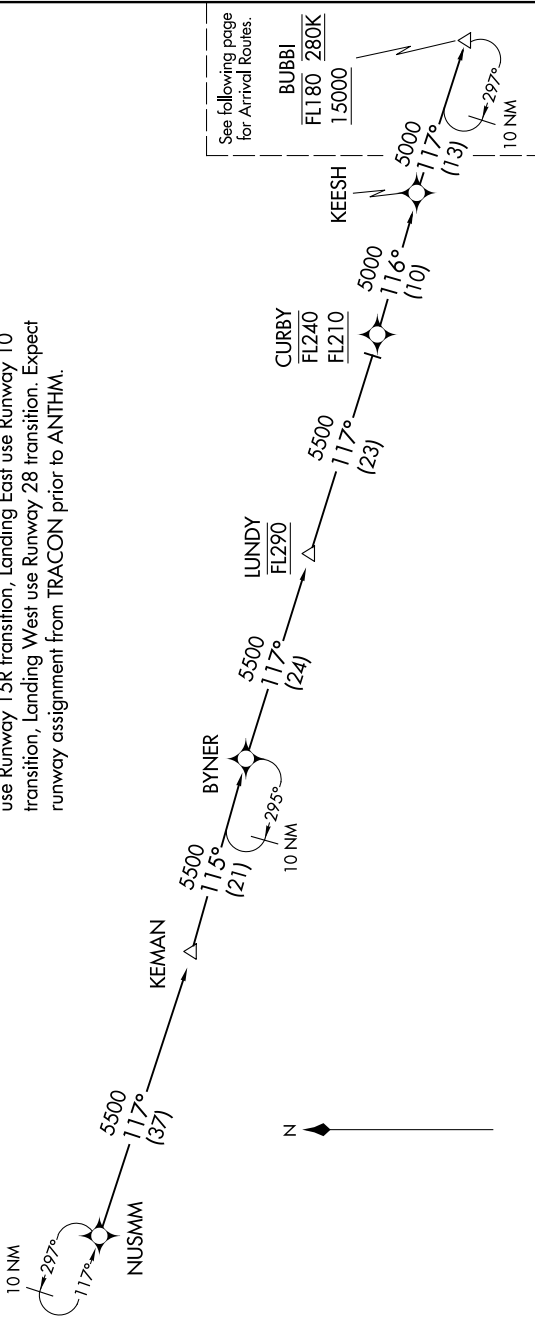
BALTIMORE, MARYLAND

NE-3, 19 FEB 2026 to 19 MAR 2026

POTOMAC APP CON
133.85 254.25
BWI D-ATIS
115.1 127.8
MTN ATIS
124.925

RNAV 1 - DME/DME/IRU or GPS.
RADAR required.

NOTE: Jet aircraft only.
NOTE: PROHIBITED AREA (P-56) 1.5 NM north of DCA avoid surface to 18000 MSL.
NOTE: Landing North use Runway 33L transition, Landing South use Runway 15R transition, Landing East use Runway 10 transition, Landing West use Runway 28 transition. Expect runway assignment from TRACON prior to ANTHM.



NOTE: Chart not to scale.

(CONTINUED ON FOLLOWING PAGES)

KEEESH TRANSITION (KEESH.ANTHM5)
KEMAN TRANSITION (KEMAN.ANTHM5)
NUSMM TRANSITION (NUSMM.ANTHM5)

NE-3, 19 FEB 2026 to 19 MAR 2026