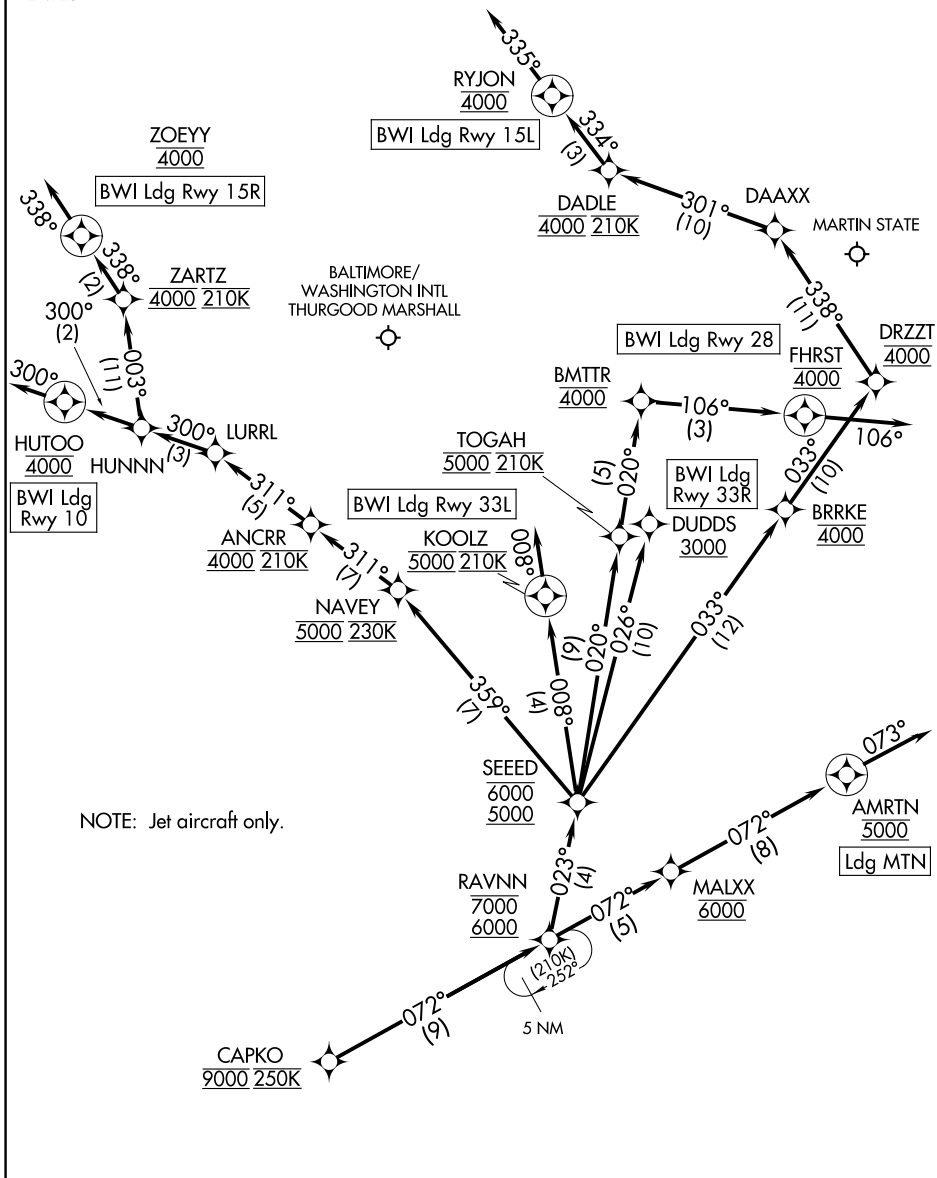


# RAVNN EIGHT ARRIVAL (RNAV) Arrival Routes

BALTIMORE, MARYLAND

POTOMAC APP CON  
 128.35 270.275  
 BWI D-ATIS  
 115.1 127.8  
 MTN ATIS  
 124.925

RNAV 1 - DME/DME/IRU or GPS.  
 RADAR required.



NE-3, 19 FEB 2026 to 19 MAR 2026

NE-3, 19 FEB 2026 to 19 MAR 2026

NOTE: Jet aircraft only.

NOTE: Chart not to scale.

(CONTINUED ON FOLLOWING PAGE)