

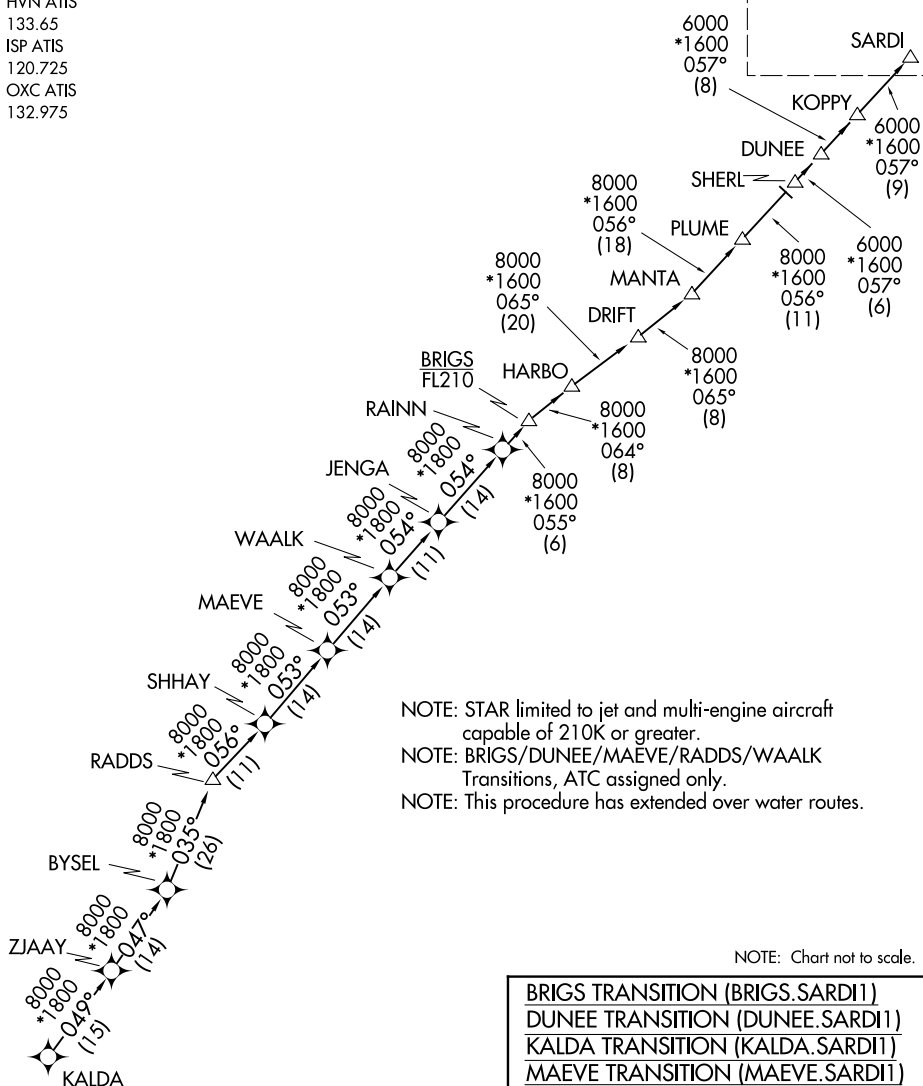
# SARDI ONE ARRIVAL (RNAV) Transition Routes

NEW YORK, NEW YORK

NEW YORK APP CON  
 120.05 343.75  
 BDR ATIS  
 119.15  
 FRG ATIS  
 126.65  
 GON ATIS  
 127.0  
 HVN ATIS  
 133.65  
 ISP ATIS  
 120.725  
 OXC ATIS  
 132.975

RNAV 1 - DME/DME/IRU or GPS.  
 RADAR required.

See following page  
 for Arrival Routes



NOTE: STAR limited to jet and multi-engine aircraft capable of 210K or greater.  
 NOTE: BRIGS/DUNEE/MAEVE/RADDS/WAALK Transitions, ATC assigned only.  
 NOTE: This procedure has extended over water routes.

NOTE: Chart not to scale.

(CONTINUED ON FOLLOWING PAGE)

- BRIGS TRANSITION (BRIGS.SARDI1)
- DUNEE TRANSITION (DUNEE.SARDI1)
- KALDA TRANSITION (KALDA.SARDI1)
- MAEVE TRANSITION (MAEVE.SARDI1)
- RADDS TRANSITION (RADDS.SARDI1)
- WAALK TRANSITION (WAALK.SARDI1)

# SARDI ONE ARRIVAL (RNAV) Transition Routes

NEW YORK, NEW YORK

NE-2, 19 FEB 2026 to 19 MAR 2026

NE-2, 19 FEB 2026 to 19 MAR 2026