

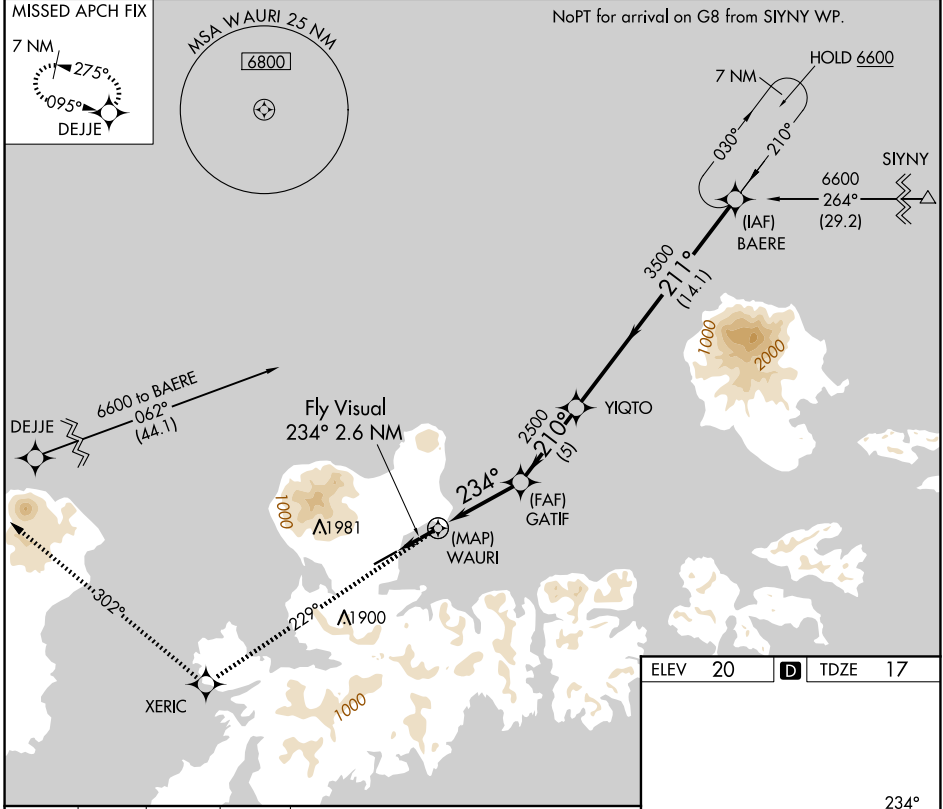
# RNAV (GPS) RWY 23

ADAK (ADK)(PADK)

APP CRS	Rwy Ldg	<b>6790</b>
<b>234°</b>	TDZE	<b>17</b>
	Apt Elev	<b>20</b>

RNP APCH-GPS.	MALS	MISSED APPROACH: Climb to 6600 on course 229° to XERIC, and right turn on course 302° to DEJJE and hold.
Circling not authorized at night. Circling NA northwest of Rwy 5-23.		

AWOS-3P <b>134.5</b>	ANCHORAGE CENTER <b>126.4 254.3</b>	CTAF <b>122.9</b>
-------------------------	--	----------------------



6600	XERIC	DEJJE	BAERE
crs 229°		crs 302°	
Fly Visual 234° 2.6 NM	WAURI	GATIF	YIQTO
	234°	210°	211°
	2500	3500	6600
	5 NM	5 NM	14.1 NM
CATEGORY	A	B	C
LNAV MDA	1220-3 1203 (1200-3)		
CIRCLING	1220-3	1200 (1200-3)	NA

ELEV 20		TDZE 17
---------	--	---------

REIL Rwy 23

HIRL Rwy 5-23

AK, 22 JAN 2026 to 19 MAR 2026

AK, 22 JAN 2026 to 19 MAR 2026