

# VOR/DME or TACAN RWY 10

VORTAC AWK <b>113.5</b> Chan <b>82</b>	APCH CRS <b>086°</b>	Rwy Idg TDZE <b>23</b> Arprt Elev <b>23</b>	<b>9844</b>
--	-------------------------	---	-------------

[USAF]

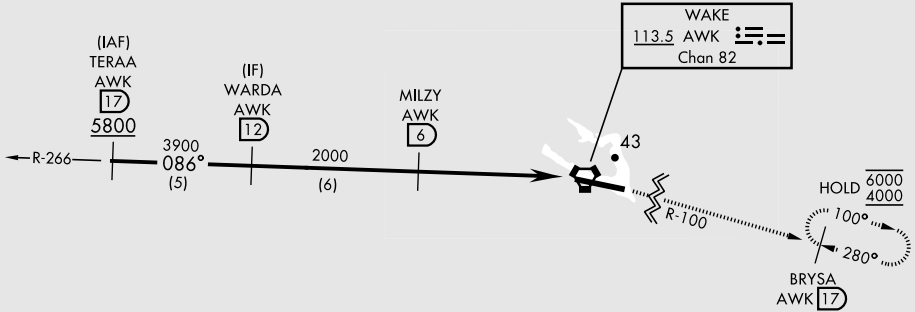
WAKE ISLAND AFLD (PWAK)

RNAV or RADAR required.

**▼** \* Circling not authorized N of Rwy 10-28.  
Visibility reduction by helicopters not authorized.

MISSED APPROACH: Climb to 4000 on AWK VORTAC R-100 direct BRYSA and hold. Continue climb-in-hold to 4000.

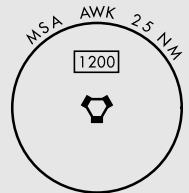
CONTACT WAKE ISLAND OPERATIONS FOR ADVISORY SERVICES  
**128.0 349.4**



When VGSI inop, procedure not authorized at night.  
USAF only: when VGSI inop, straight-in Rwy 10 authorized at night with MAJCOM A3 approval.

CAUTION: When circling to Rwy 28 at night, operational VGSI required, remain on or above VGSI glidepath until threshold.

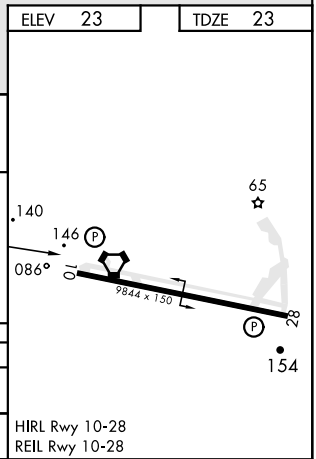
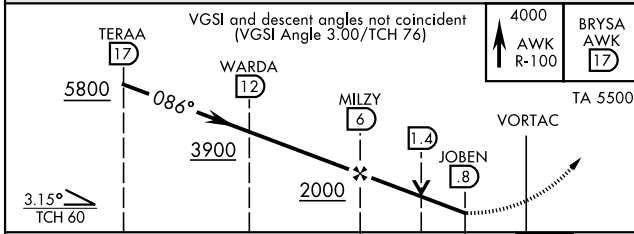
CAUTION: Procedure in uncontrolled airspace. Uncontrolled airspace below 5500' AGL.



PAC, 22 JAN 2026 to 19 MAR 2026

PAC, 22 JAN 2026 to 19 MAR 2026

EMERG SAFE ALT 100 NM 1200



CATEGORY	A	B	C	D	E
S-10	460-1 437 (500-1)	(500-1)	460-1 1/4 437	(500-1 1/4)	
<b>C</b> CIRCLING *	460-1 437 (500-1)	480-1 457 (500-1)	480-1 1/2 457 (500-1 1/2)	580-2 557 (600-2)	

HIRL Rwy 10-28  
REIL Rwy 10-28

WAKE ISLAND, WAKE ISLAND  
Orig 13JUN24  
TERPS

19°17'N-166°38'E

WAKE ISLAND AFLD (PWAK)

# VOR/DME or TACAN RWY 10