

(TERPZ8.TERPZ) 24193

AL-5222 (FAA)

MARTIN STATE (MTN)

BALTIMORE, MARYLAND

# TERPZ EIGHT DEPARTURE (RNAV)

POTOMAC DEP CON  
 119.7 290.475  
 ATIS  
 124.925  
 GND CON  
 121.8 253.4  
 MARTIN TOWER ★  
 121.3 (CTAF) 254.425  
 UNICOM  
 122.95

RNAV 1 - DME/DME/IRU or GPS.

RADAR required.

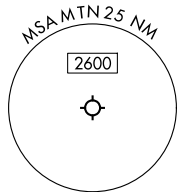
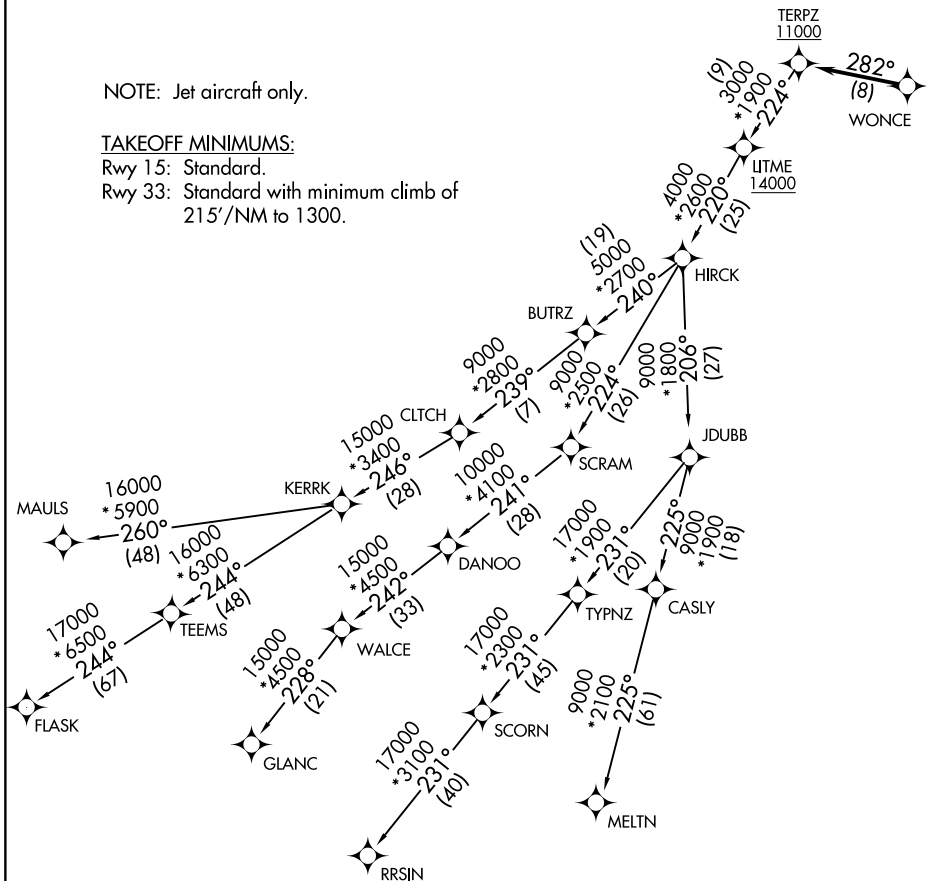
**TOP ALTITUDE:**  
**17000**

NOTE: Jet aircraft only.

TAKEOFF MINIMUMS:

Rwy 15: Standard.

Rwy 33: Standard with minimum climb of 215'/NM to 1300.



NOTE: Chart not to scale.

NE-3, 19 FEB 2026 to 19 MAR 2026

NE-3, 19 FEB 2026 to 19 MAR 2026

# TERPZ EIGHT DEPARTURE (RNAV)

(TERPZ8.TERPZ) 11JUL24

BALTIMORE, MARYLAND  
MARTIN STATE (MTN)