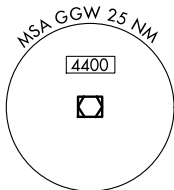


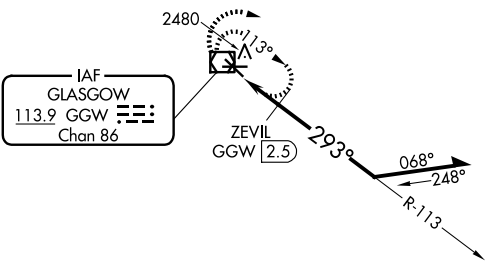
VOR/DME GWW 113.9 Chan 86	APP CRS 293°	Rwy Idg TDZE Apt Elev	5001 2294 2296
---	------------------------	-----------------------------	---

VOR RWY 30
WOKAL FLD/GLASGOW-VALLEY COUNTY (GGW)

<p>▼ ZEVIL fix Straight-in minimums NA when using Wolf Point altimeter setting. When local altimeter setting not received, use Wolf Point altimeter setting and increase all MDA 160 feet and increase visibilities all Cats ½ SM.</p>	<p>MISSED APPROACH: Climb to 4000 in GGW VOR/DME holding pattern.</p>	
ASOS 135.175	SALT LAKE CENTER 126.85 305.2	UNICOM 122.8 (CTAF) 0



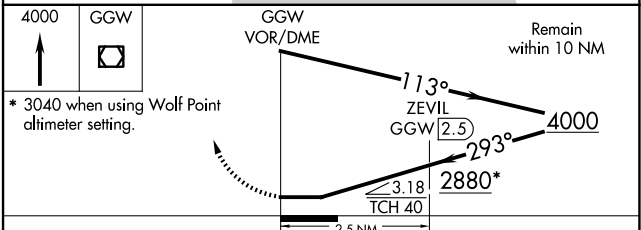
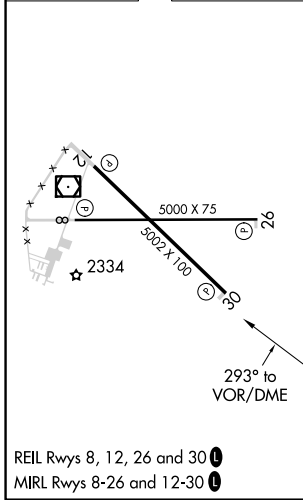
A 3022



NW-1, 19 FEB 2026 to 19 MAR 2026

NW-1, 19 FEB 2026 to 19 MAR 2026

ELEV 2296	D	TDZE 2294
-----------	----------	-----------



CATEGORY	A	B	C	D
S-30	2880-1	586 (600-1)	2880-1¾	586 (600-1¾)
CIRCLING	2880-1	584 (600-1)	2880-1¾ 584 (600-1¾)	2900-2 604 (700-2)
ZEVIL FIX MINIMUMS				
S-30	2740-1	446 (500-1)	2740-1⅜	446 (500-1⅜)
CIRCLING	2780-1	484 (500-1)	2780-1½ 484 (500-1½)	2900-2 604 (700-2)