

(LFK4.LFK) 25331

AL-5573 (FAA)

CONROE/NORTH HOUSTON RGNL (CXO)
HOUSTON, TEXAS

LUFKIN FOUR DEPARTURE

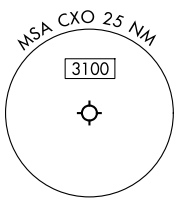
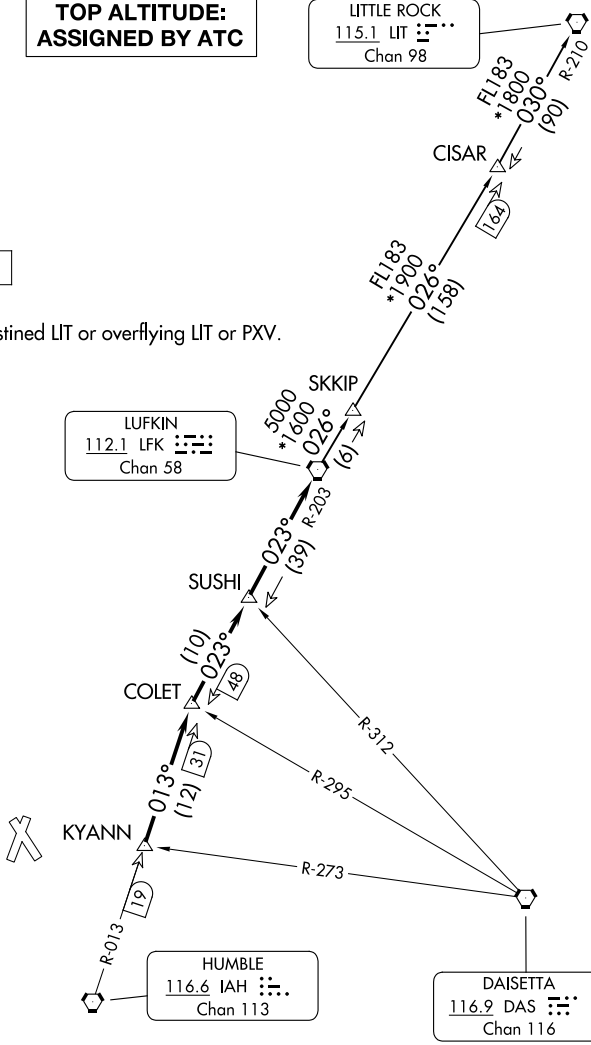
HOUSTON DEP CON
119.7 281.4
ATIS
118.325
CLNC DEL
120.45
CLNC DEL
119.55 (When twr closed)
GND CON
120.45
CONROE TOWER *
124.125 (CTAF)

**TOP ALTITUDE:
ASSIGNED BY ATC**

LITTLE ROCK
115.1 LIT :::::
Chan 98

RADAR and DME required.

NOTE: For aircraft destined LIT or overflying LIT or PXV.



TAKEOFF MINIMUMS
Rwys 1, 14, 19, 32: Standard.

NOTE: Chart not to scale.

(CONTINUED ON FOLLOWING PAGE)

SC-5, 19 FEB 2026 to 19 MAR 2026

SC-5, 19 FEB 2026 to 19 MAR 2026

LUFKIN FOUR DEPARTURE
(LFK4.LFK) 27NOV25

HOUSTON, TEXAS
CONROE/NORTH HOUSTON RGNL (CXO)