

APP CRS	Rwy Idg	<b>5001</b>
<b>079°</b>	TDZE	<b>350</b>
	Apt Elev	<b>355</b>

# RNAV (GPS) RWY 8

J LYNN HELMS SEVIER COUNTY (DEQ)

RNP APCH-GPS.

**⚠** When local altimeter setting not received, use TXK altimeter and increase all MDAs 100 feet. Rwy 8 helicopter visibility reduction below  $\frac{3}{4}$  SM NA. Circling Rwy 26 NA at night.

MISSED APPROACH: Climbing right turn to 2500 direct ZEBOB and hold.

ASOS  
**134.075**

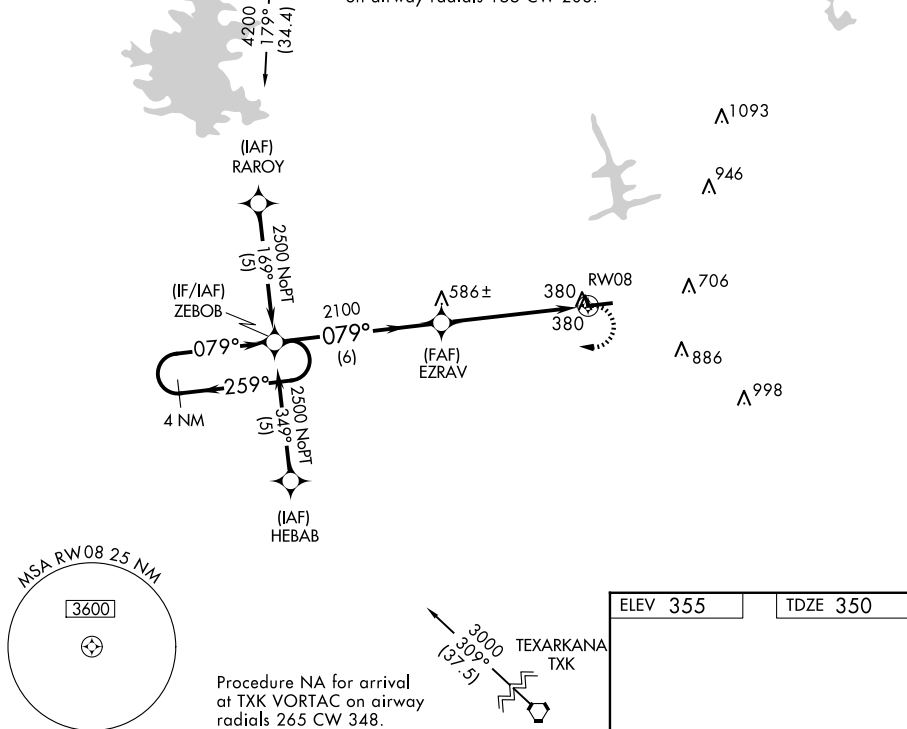
FORT WORTH CENTER  
**123.925 269.475**

UNICOM  
**122.8 (CTAF) 0**

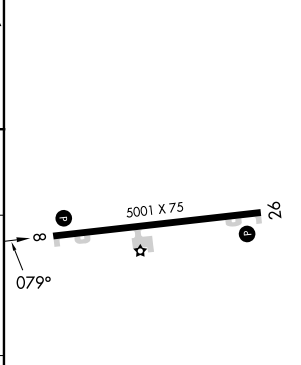
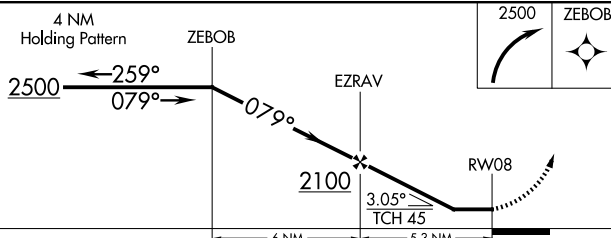
1620 **⚠**

RICH MOUNTAIN PGO

Procedure NA for arrival at PGO VORTAC on airway radials 155 CW 208.



ELEV 355	TDZE 350
----------	----------



CATEGORY	A	B	C	D
LNVA MDA	780-1	430 (500-1)		NA
CIRCLING	900-1 545 (600-1)	920-1 565 (600-1)		NA

REIL Rwy 8 and 26 **0**  
MIRL Rwy 8-26 **0**

SC-1, 19 FEB 2026 to 19 MAR 2026

SC-1, 19 FEB 2026 to 19 MAR 2026