

KINGDOM FIVE DEPARTURE

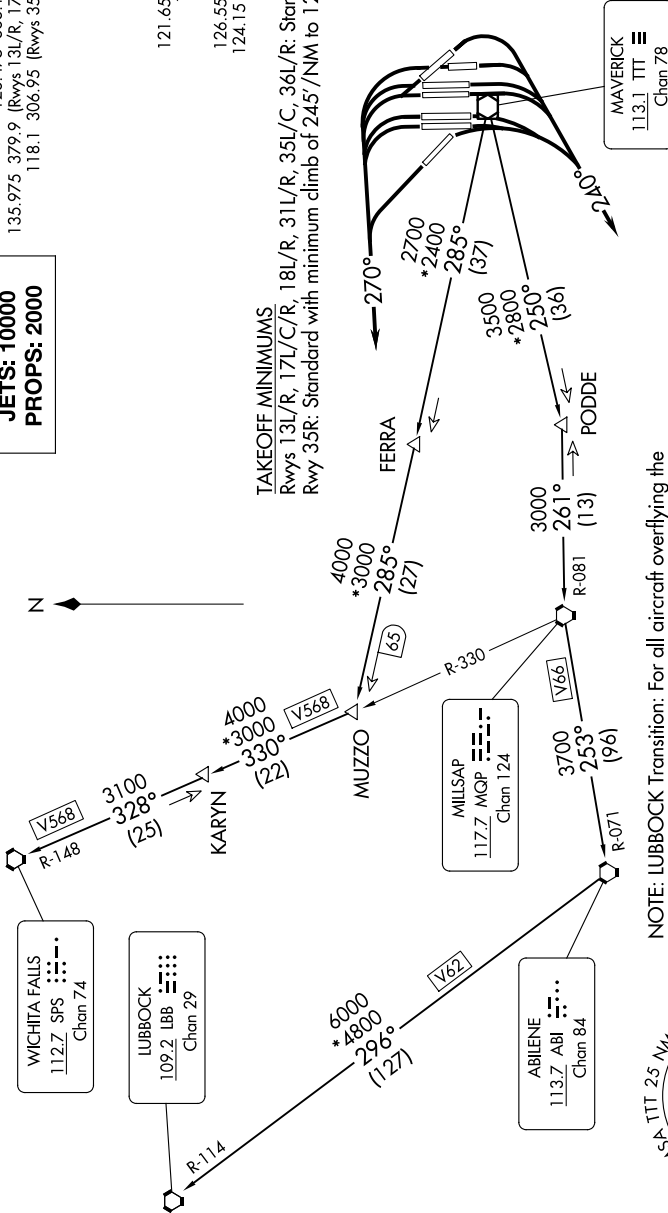
SC-2, 19 FEB 2026 to 19 MAR 2026

RADAR and DME required.

TOP ALTITUDE:
JETS: 10000
PROPS: 2000

LONE STAR DEP CON
126.475 363.15 (JETS ONLY)
135.975 379.9 (Rwys 13L/R, 17L/C/R, 18L/R)
118.1 306.95 (Rwys 35L/C/R, 36L/R)
D-ATIS
135.925
CLNC DEL
128.25
CPDLC
GND CON
121.65 121.8 (EAST)
121.85 (WEST)
DFW TOWER
126.55 127.5 (EAST)
124.15 134.9 (WEST)

TAKEOFF MINIMUMS
Rwys 13L/R, 17L/C/R, 18L/R, 31L/R, 35L/C, 36L/R: Standard.
Rwy 35R: Standard with minimum climb of 245'/NM to 1200.



- NOTE: LUBBOCK Transition: For all aircraft overlying the MQP VORTAC westbound or direct.
- NOTE: MILLSAP Transition: For all aircraft overlying the MQP VORTAC westbound or direct.
- NOTE: PODDE Transition: ATC assigned.
- NOTE: WICHITA FALLS Transition: For all aircraft landing within the Wichita Falls terminal area or overlying the SPS VORTAC.
- NOTE: For all aircraft requesting 17000 and below.
- NOTE: Dallas-Fort Worth Intl Departures: Do not exceed 240K until leaving 5000.

NOTE: Chart not to scale.

(CONTINUED ON FOLLOWING PAGE)

KINGDOM FIVE DEPARTURE

SC-2, 19 FEB 2026 to 19 MAR 2026