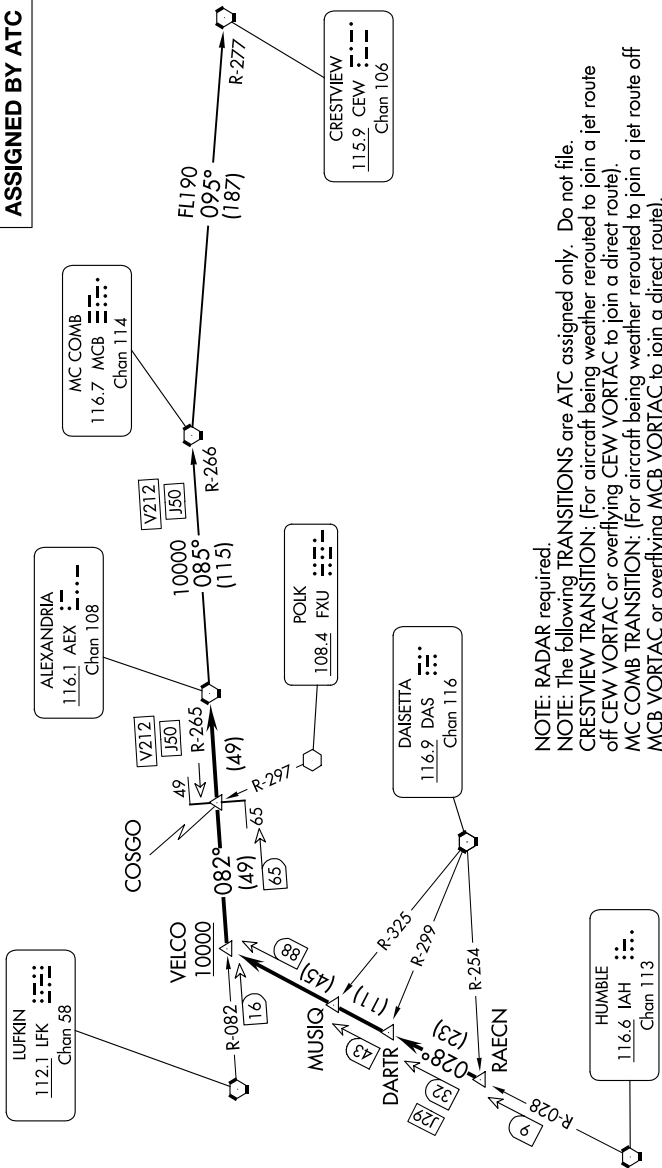


ALEXANDRIA THREE DEPARTURE

SC-5, 19 FEB 2026 to 19 MAR 2026

HOUSTON DEP CON
123.8 257.7
CLNC DEL
121.15
CTAF
123.05

**TOP ALTITUDE:
ASSIGNED BY ATC**



NOTE: RADAR required.
 NOTE: The following TRANSITIONS are ATC assigned only. Do not file.
 CRESTVIEW TRANSITION: (For aircraft being weather rerouted to join a jet route off CEW VORTAC or overflying CEW VORTAC to join a direct route).
 MC COMB TRANSITION: (For aircraft being weather rerouted to join a jet route off MCB VORTAC or overflying MCB VORTAC to join a direct route).

TAKEOFF MINIMUMS
 Rwy 15, 33: Standard.

(CONTINUED ON FOLLOWING PAGE)

SC-5, 19 FEB 2026 to 19 MAR 2026

ALEXANDRIA THREE DEPARTURE

NOTE: Chart not to scale.