

(LFK4.LFK) 25331

AL-6453 (FAA)

TEXAS GULF COAST RGNL (LBX)
ANGLETON/LAKE JACKSON, TEXAS

LUFKIN FOUR DEPARTURE

HOUSTON DEP CON
134.45 284.0
ASOS
119.925
CLNC DEL
125.2
CTAF
123.0

**TOP ALTITUDE:
ASSIGNED BY ATC**

LITTLE ROCK
115.1 LIT ::::
Chan 98

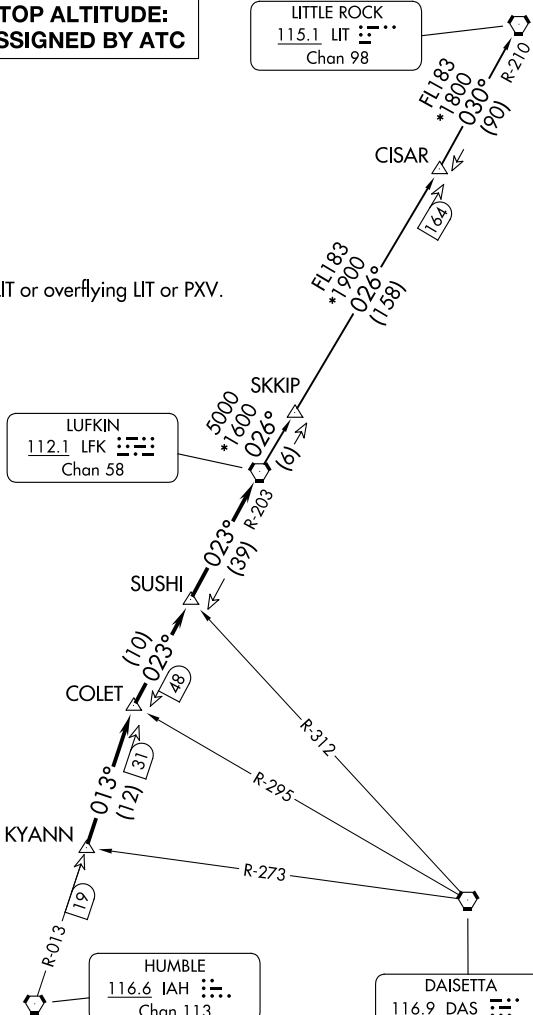
RADAR and DME required.

NOTE: For aircraft destined LIT or overflying LIT or PXV.

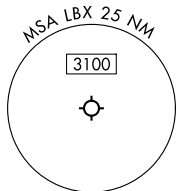
LUFKIN
112.1 LFK ::::
Chan 58

HUMBLE
116.6 IAH ::::
Chan 113

DAISETTA
116.9 DAS ::::
Chan 116



TAKEOFF MINIMUMS
Rwys 17, 35: Standard.



NOTE: Chart not to scale.

(CONTINUED ON FOLLOWING PAGE)

LUFKIN FOUR DEPARTURE

(LFK4.LFK) 27NOV25

ANGLETON/LAKE JACKSON, TEXAS
TEXAS GULF COAST RGNL (LBX)

SC-5, 19 FEB 2026 to 19 MAR 2026

SC-5, 19 FEB 2026 to 19 MAR 2026