

BORRN SIX DEPARTURE (RNAV)

SC-5, 19 FEB 2026 to 19 MAR 2026

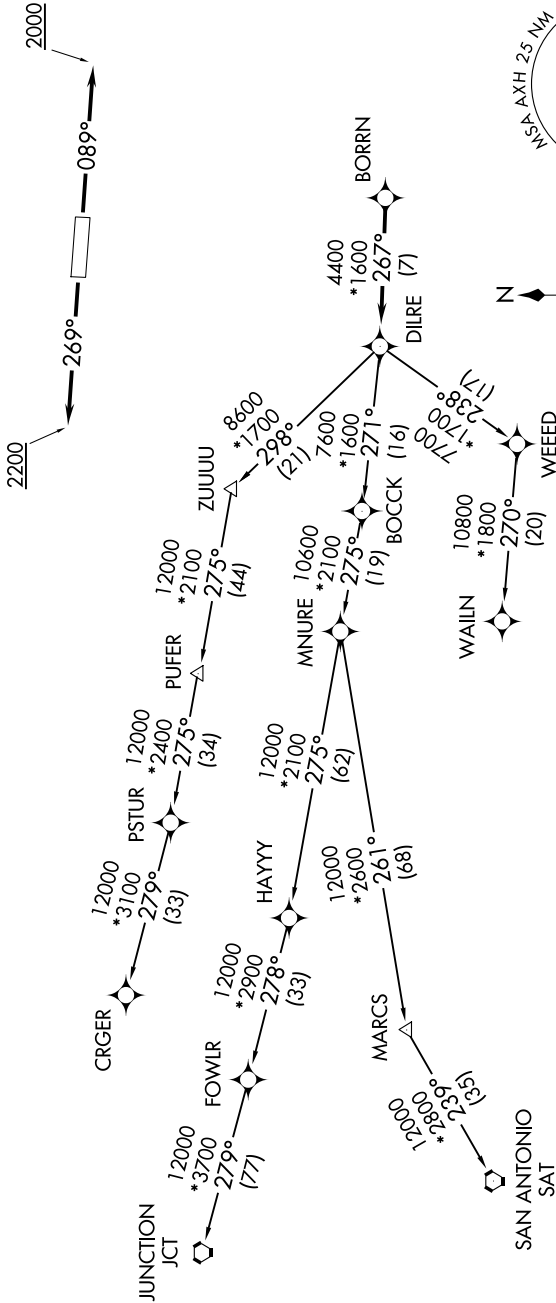
AWOS-3
123.625
CTAF
123.0
CLNC DEL
120.8
HOUSTON DEP CON
123.8 257.7

TAKEOFF MINIMUMS

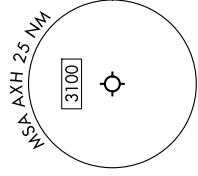
Rwys 9, 27: Standard with minimum
climb of 500'/NM to 580.

RNAV 1 - DME/DME/IRU or GPS.
RADAR required.

TOP ALTITUDE:
ASSIGNED BY ATC



NOTE: CRGR-TRANSITION ATC assigned only
for aircraft departing 54T, AXH, EFD, GLS,
HPY, IWS, LBX, LVJ, SGR, TME, T00, T41.



NOTE: Chart not to scale.

(CONTINUED ON FOLLOWING PAGE)

SC-5, 19 FEB 2026 to 19 MAR 2026

BORRN SIX DEPARTURE (RNAV)