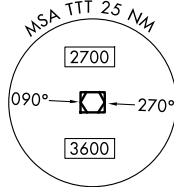


# JOE POOL EIGHT DEPARTURE

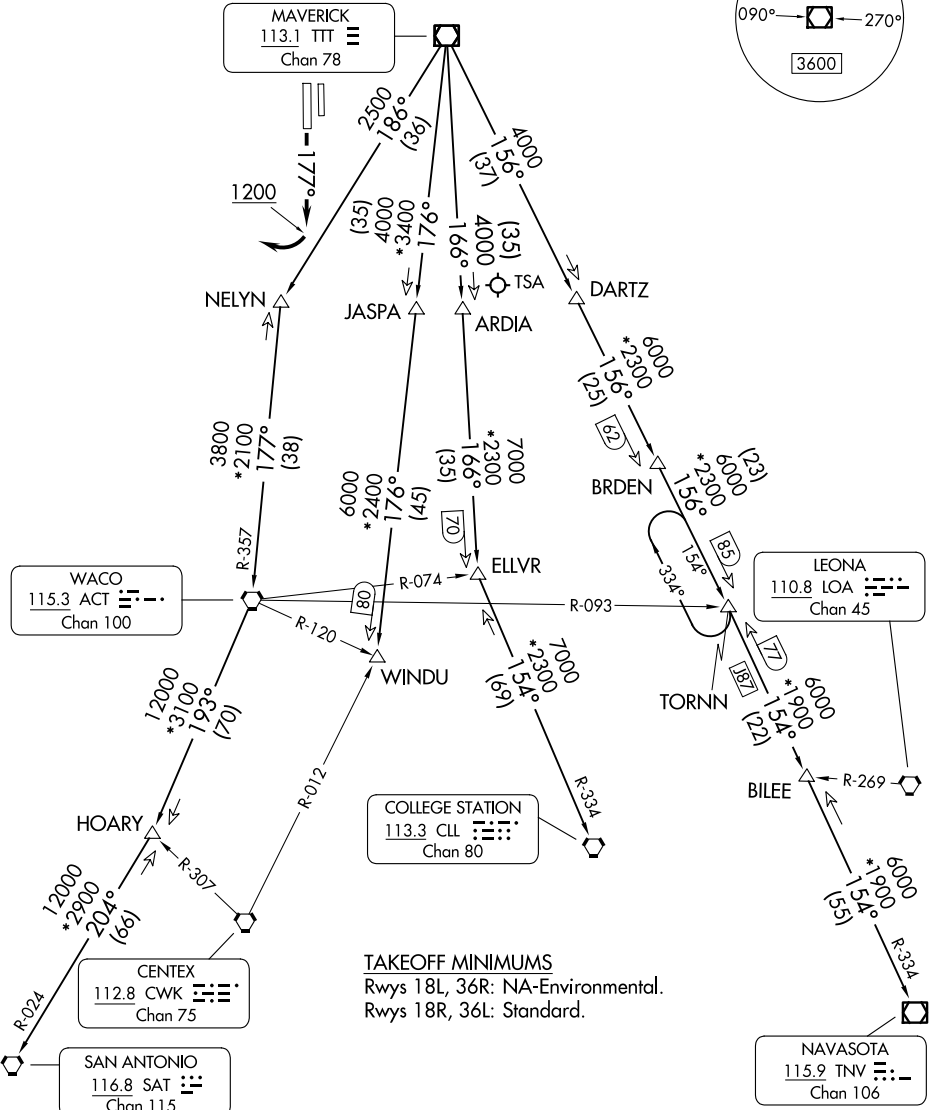
LONE STAR DEP CON  
135.975 379.9  
ATIS  
120.025  
GND CON  
119.475  
SPINKS TOWER ★  
124.625 (CTAF)

RADAR and DME required.

**TOP ALTITUDE:  
ASSIGNED BY ATC**



**MAVERICK**  
113.1 TTT  
Chan 78



**TAKEOFF MINIMUMS**  
Rwys 18L, 36R: NA-Environmental.  
Rwys 18R, 36L: Standard.

(CONTINUED ON FOLLOWING PAGE)

NOTE: Chart not to scale.

# JOE POOL EIGHT DEPARTURE

SC-2, 19 FEB 2026 to 19 MAR 2026

SC-2, 19 FEB 2026 to 19 MAR 2026