

# NANDR THREE DEPARTURE (RNAV)

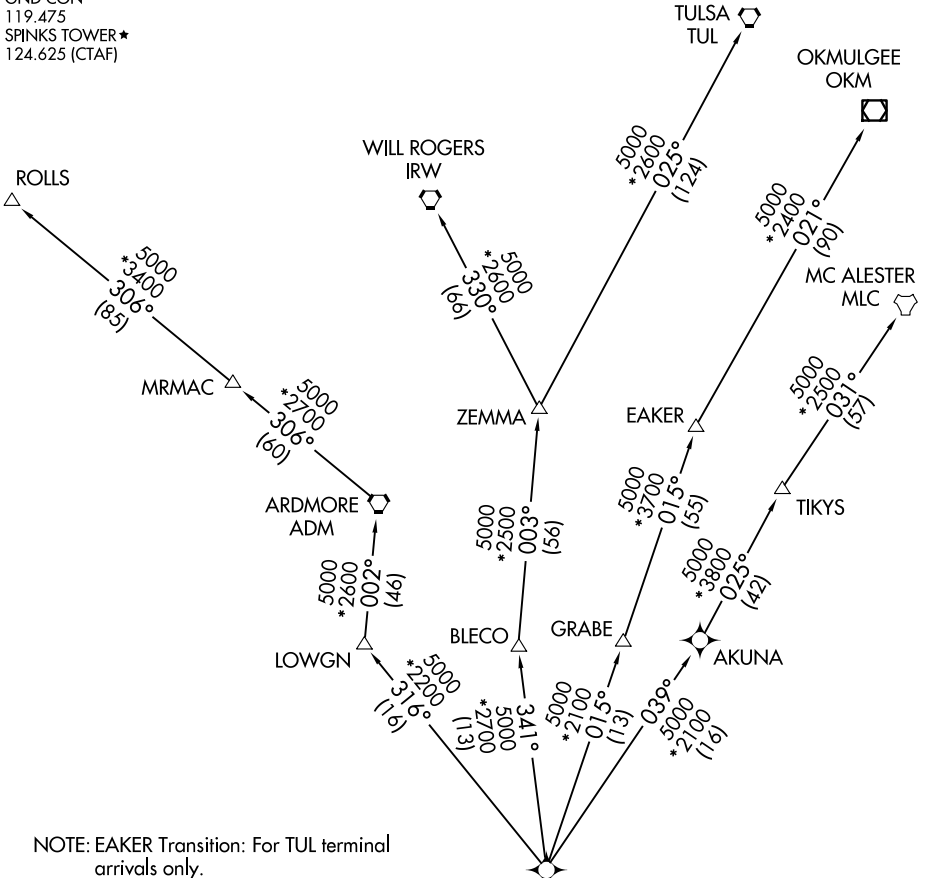
FORT WORTH, TEXAS

LONE STAR DEP CON  
135.975 379.9  
ATIS  
120.025  
GND CON  
119.475  
SPINKS TOWER★  
124.625 (CTAF)

RNAV 1 - DME/DME/IRU or GPS.

RADAR required.

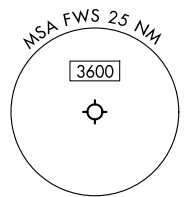
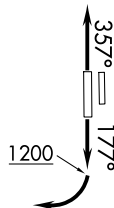
**TOP ALTITUDE:  
ASSIGNED BY ATC**



NOTE: EAKER Transition: For TUL terminal arrivals only.  
NOTE: TULSA Transition: For all aircraft overflying TUL VORTAC.  
NOTE: Aircraft arriving to the Oklahoma City terminal area, file and expect the ZEMMA enroute transition.

### TAKEOFF MINIMUMS

Rwys 18L, 36R: NA-Environmental.  
Rwys 18R, 36L: Standard.



(CONTINUED ON FOLLOWING PAGE)

SC-2, 19 FEB 2026 to 19 MAR 2026

SC-2, 19 FEB 2026 to 19 MAR 2026

# NANDR THREE DEPARTURE (RNAV)

(NANDR3.NANDR) 17APR25

FORT WORTH, TEXAS  
FORT WORTH SPINKS (FWS)