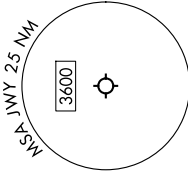


**BOTCH ONE DEPARTURE (RNAV)**

MIDLOTHIAN/WAXAHACHIE, TEXAS

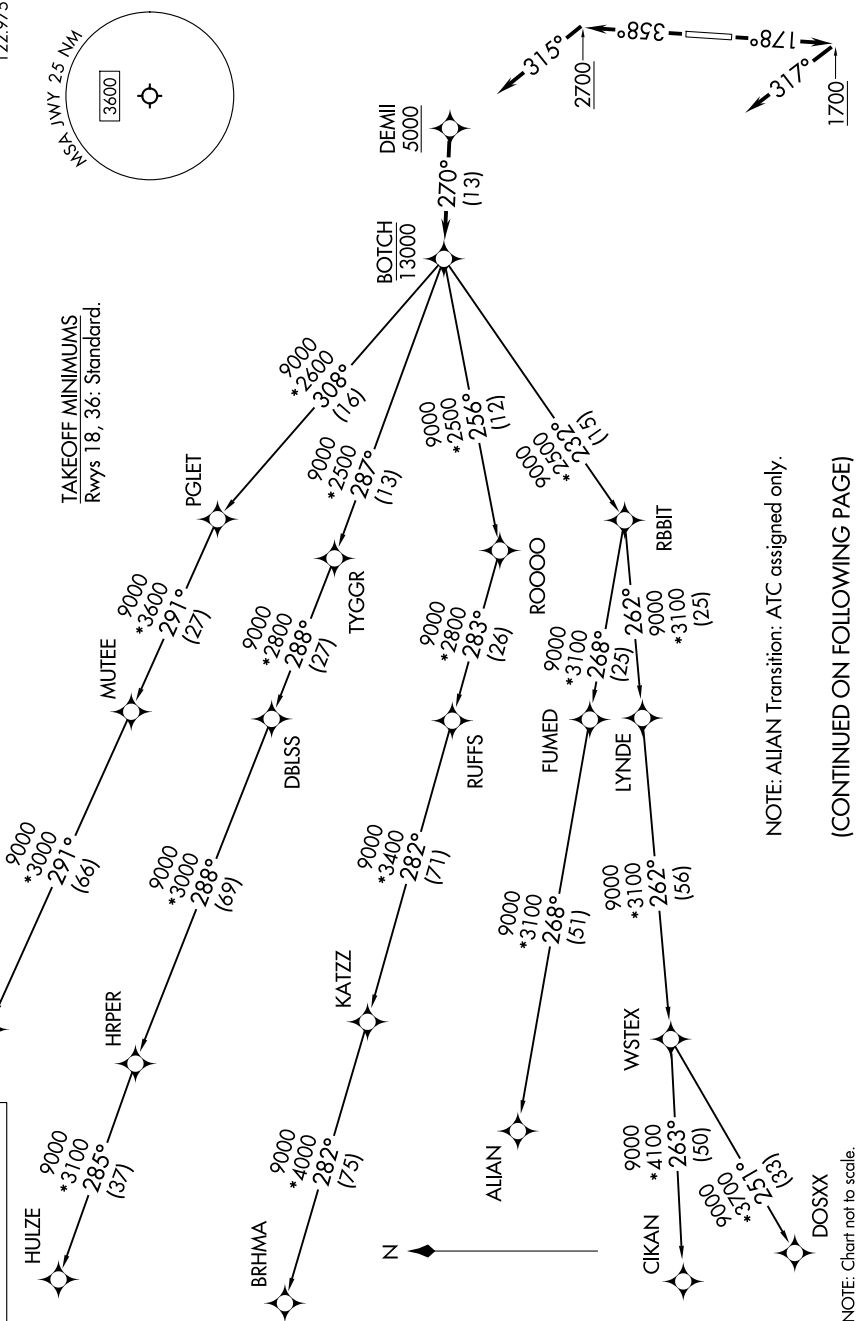
LONE STAR DEP CON  
125.2 343.65  
CTAF  
122.975



RNAV 1 - DME/DME/IRU or GPS required.  
RADAR required for non-GPS equipped aircraft.

TAKEOFF MINIMUMS  
Rwys 18, 36: Standard.

**TOP ALTITUDE:  
ASSIGNED BY ATC**



NOTE: ALIAN Transition: ATC assigned only.

(CONTINUED ON FOLLOWING PAGE)

NOTE: Chart not to scale.

**BOTCH ONE DEPARTURE (RNAV)**

MIDLOTHIAN/WAXAHACHIE, TEXAS