

# GARLAND SIX DEPARTURE

MIDLOTHIAN/WAXAHACHIE, TEXAS

SC-2, 19 FEB 2026 to 19 MAR 2026

LONE STAR DEP CON  
125.2 343.65  
CTAF  
122.975

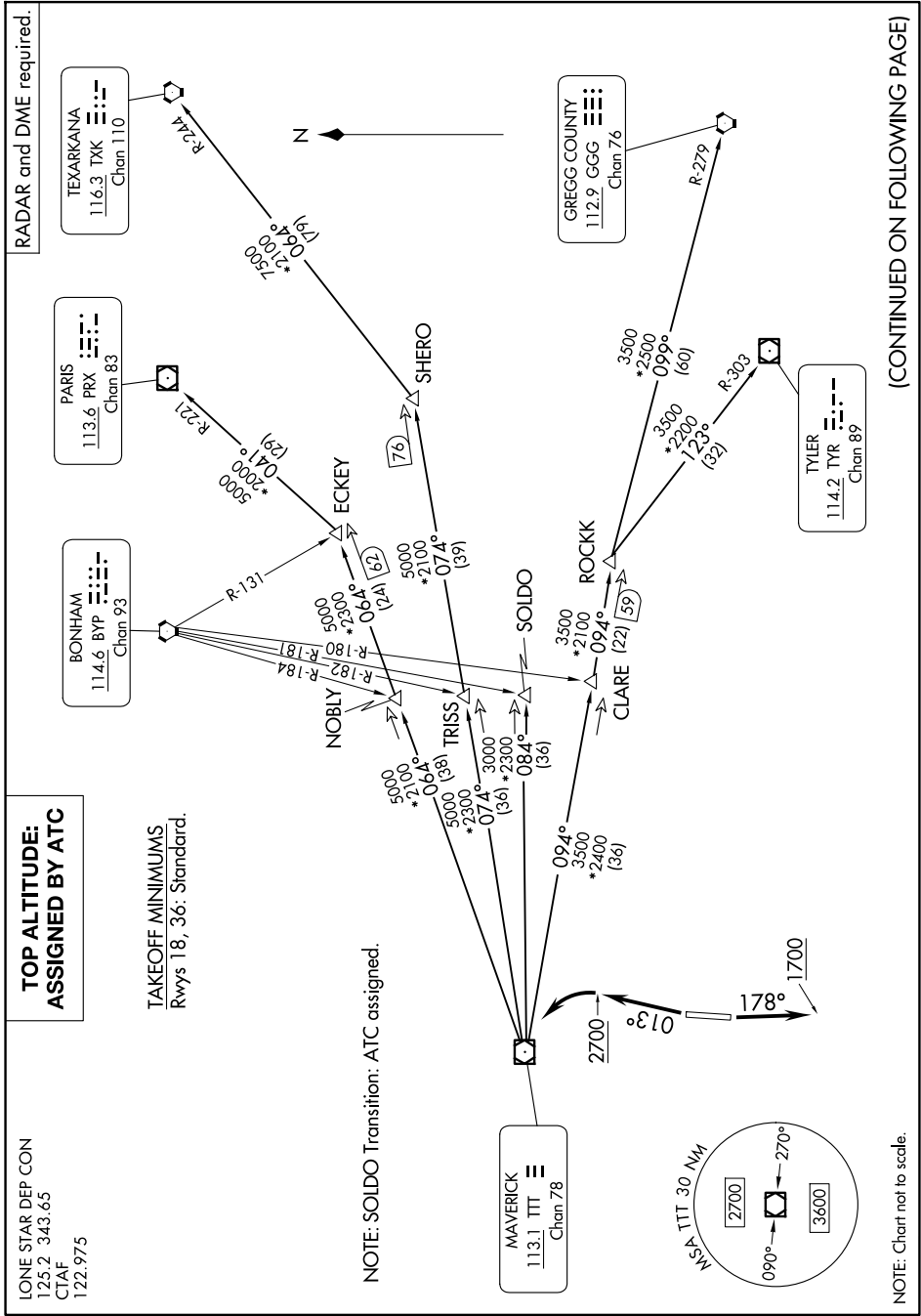
**TOP ALTITUDE:  
ASSIGNED BY ATC**

**RADAR and DME required.**

**TAKEOFF MINIMUMS**  
Rwys 18, 36: Standard.

NOTE: SOLDO Transition: ATC assigned.

NOTE: Chart not to scale.



(CONTINUED ON FOLLOWING PAGE)

SC-2, 19 FEB 2026 to 19 MAR 2026