

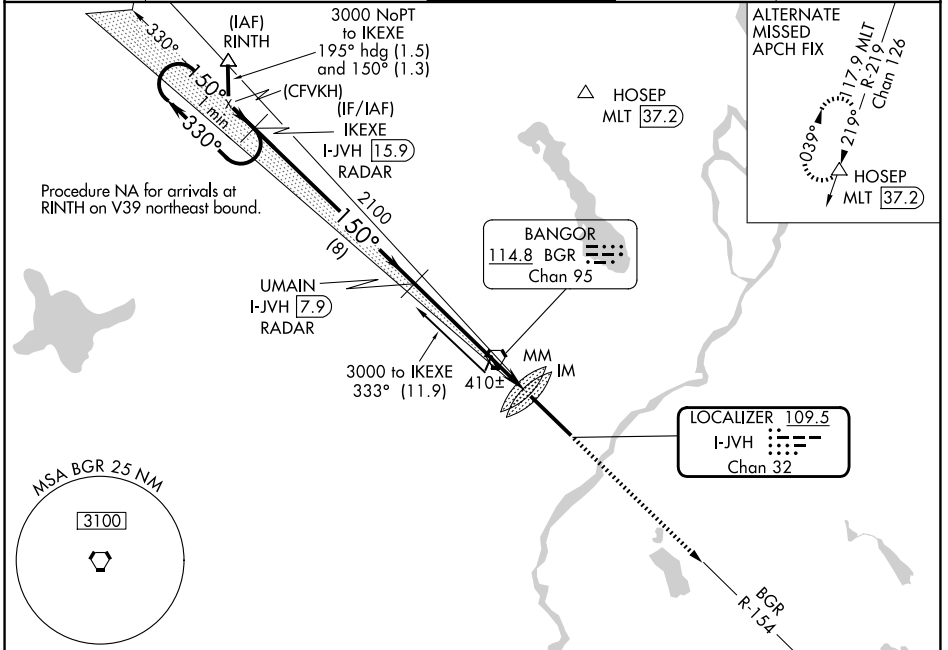
LOC/DME I-JVH 109.5 Chan 32	APP CRS 150°	Rwy Ldg TDZE 192 Apt Elev 192
-------------------------------------------------	------------------------	------------------------------------------------------

ILS Y RWY 15 (CAT II & III)

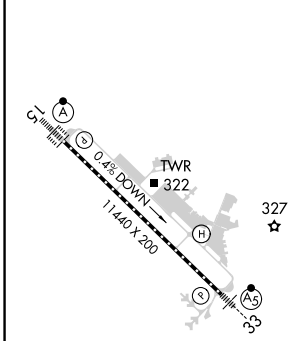
BANGOR INTL (BGR)

<p>DME or RADAR required.</p>	ALSF-2 	MISSED APPROACH: Climb to 3000 on heading 150° and BGR VORTAC R-154 to ELSUH/BGR 18.3 DME/RADAR and hold.
	<p>ASR</p>	

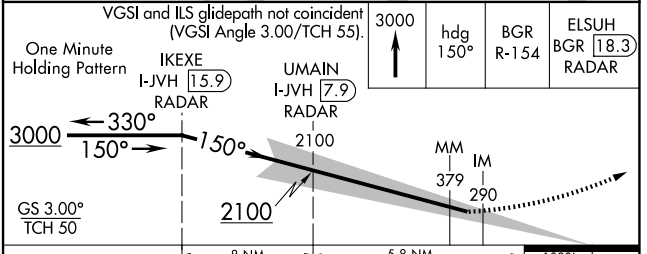
ATIS 127.75	BANGOR APP CON 118.925 239.3	BANGOR TOWER 120.7 233.7	GND CON 121.9 348.6	CLNC DEL 135.9 348.6
-----------------------	----------------------------------------	------------------------------------	-------------------------------	--------------------------------



ELEV 192	D	TDZE 192
----------	----------	----------



DME or RADAR REQUIRED



CATEGORY	A	B	C	D
S-ILS 15	CAT II RA 113/12 100 DA 292			
S-ILS 15	CAT III RVR 06			

CATEGORY II & III ILS - SPECIAL AIRCREW & AIRCRAFT CERTIFICATION REQUIRED

NE-1, 19 MAR 2026 to 16 APR 2026

NE-1, 19 MAR 2026 to 16 APR 2026