

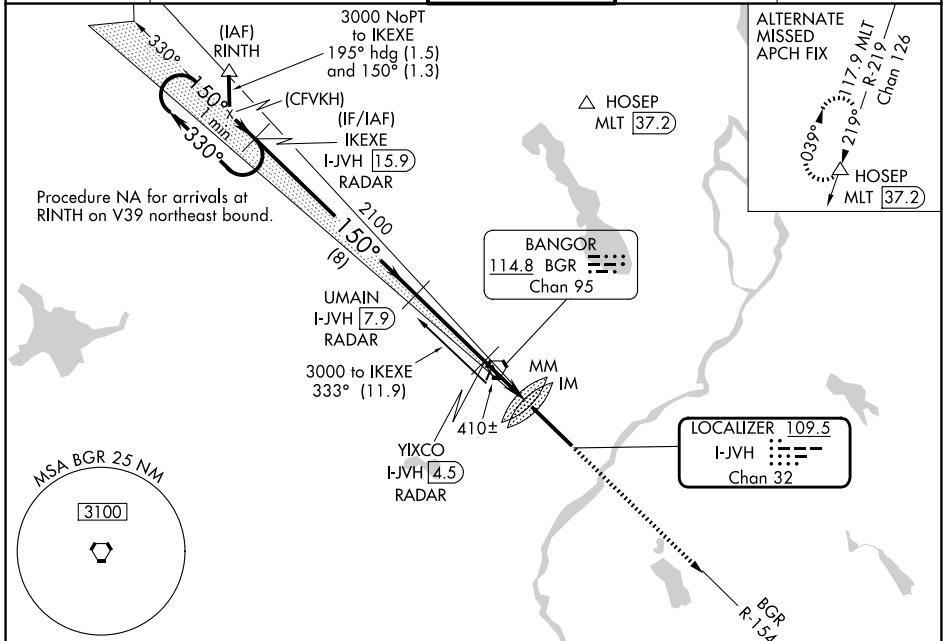
LOC/DME I-JVH 109.5 Chan 32	APP CRS 150°	Rwy Ldg 11440 TDZE 192 Apt Elev 192
---	------------------------	---

ILS Y or LOC Y RWY 15

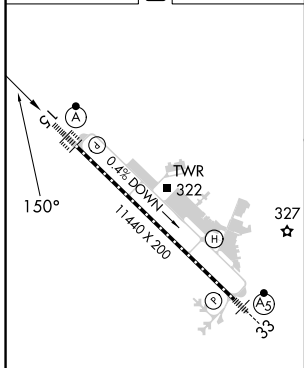
BANGOR INTL (BGR)

ASR Circling NA NE of Rwy 15-33. DME or RADAR required. For inoperative ALS, increase S-ILS 15 Cat E visibility to RVR 4000, and S-LOC 15 Cat C/D/E visibility to 1/2 SM.	ALSF-2 	MISSED APPROACH: Climb to 3000 on heading 150° and BGR VORTAC R-154 to ELSUH/BGR 18.3 DME/RADAR and hold.
---	------------	---

ATIS 127.75	BANGOR APP CON 118.925 239.3	BANGOR TOWER 120.7 233.7	GND CON 121.9 348.6	CLNC DEL 135.9 348.6
-----------------------	--	------------------------------------	-------------------------------	--------------------------------

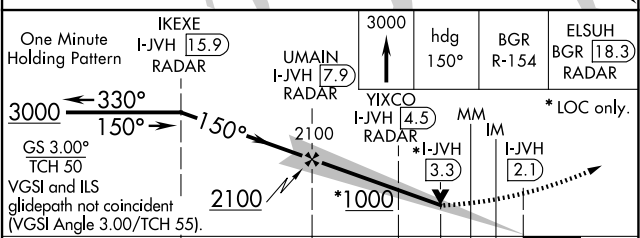


ELEV 192	D	TDZE 192
----------	----------	----------



DME or RADAR REQUIRED

One Minute Holding Pattern	IKEXE I-JVH 15.9 RADAR	UMAIN I-JVH 7.9 RADAR	3000 hdg 150°	BGR R-154	ELSUH BGR 18.3 RADAR
----------------------------	------------------------	-----------------------	---------------	-----------	----------------------



TDZ/CL Rwy 15 HIRL Rwy 15-33	FAF to MAP 5.8 NM	<table border="1"> <tr> <th>CATEGORY</th> <th>A</th> <th>B</th> <th>C</th> <th>D</th> <th>E</th> </tr> <tr> <td>S-ILS 15</td> <td colspan="5">392/18 200 (200-1/2)</td> </tr> <tr> <td>S-LOC 15</td> <td colspan="5">660/50 468 (500-1)</td> </tr> <tr> <td>CIRCLING</td> <td>660-1 468 (500-1)</td> <td>720-1 528 (600-1)</td> <td>740-1 1/2 548 (600-1 1/2)</td> <td>820-2 628 (700-2)</td> <td>880-2 1/2 688 (700-2 1/2)</td> </tr> </table>	CATEGORY	A	B	C	D	E	S-ILS 15	392/18 200 (200-1/2)					S-LOC 15	660/50 468 (500-1)					CIRCLING	660-1 468 (500-1)	720-1 528 (600-1)	740-1 1/2 548 (600-1 1/2)	820-2 628 (700-2)	880-2 1/2 688 (700-2 1/2)
CATEGORY	A	B	C	D	E																					
S-ILS 15	392/18 200 (200-1/2)																									
S-LOC 15	660/50 468 (500-1)																									
CIRCLING	660-1 468 (500-1)	720-1 528 (600-1)	740-1 1/2 548 (600-1 1/2)	820-2 628 (700-2)	880-2 1/2 688 (700-2 1/2)																					

NE-1, 19 MAR 2026 to 16 APR 2026

NE-1, 19 MAR 2026 to 16 APR 2026