

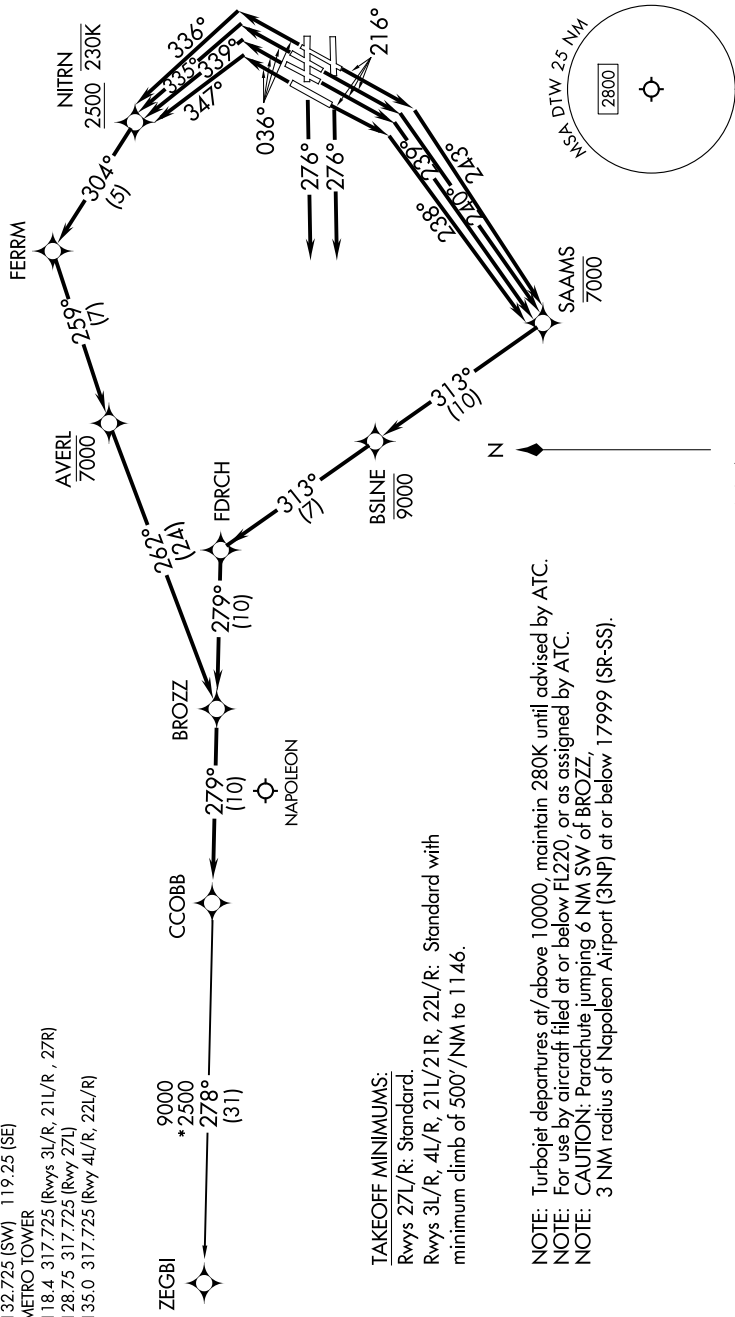
# CCOBB THREE DEPARTURE (RNAV)

EC-1, 19 MAR 2026 to 16 APR 2026

DETROIT DEP CON  
 125.525 284.0 (Rwy 3L/R, 4L/R, 21L/R, 22L/R)  
 132.025 284.0 (Rwy 27L/R)  
 D-ATIS 118.125  
 CLNC DEL 120.65  
 CPDIC  
 GND CON  
 121.8 (NW) 119.45 (NE)  
 132.725 (SW) 119.25 (SE)  
 METRO TOWER  
 118.4 317.725 (Rwys 3L/R, 21L/R, 27R)  
 128.75 317.725 (Rwy 27L)  
 135.0 317.725 (Rwy 4L/R, 22L/R)

RNAV 1 - DME/DME/IRU or GPS.  
 RADAR required.

**TOP ALTITUDE:  
 17000**



**TAKEOFF MINIMUMS:**  
 Rwys 27L/R: Standard.  
 Rwys 3L/R, 4L/R, 21L/21R, 22L/R: Standard with minimum climb of 500'/NM to 1146.

**NOTE:** Turbojet departures at/above 10000, maintain 280K until advised by ATC.  
**NOTE:** For use by aircraft filed at or below FL220, or as assigned by ATC.  
**NOTE:** CAUTION: Parachute jumping 6 NM SW of BROZZ.  
 3 NM radius of Napoleon Airport (3NP) at or below 17999 (SR-SS).

(CONTINUED ON FOLLOWING PAGE)

NOTE: Chart not to scale.

# CCOBB THREE DEPARTURE (RNAV)