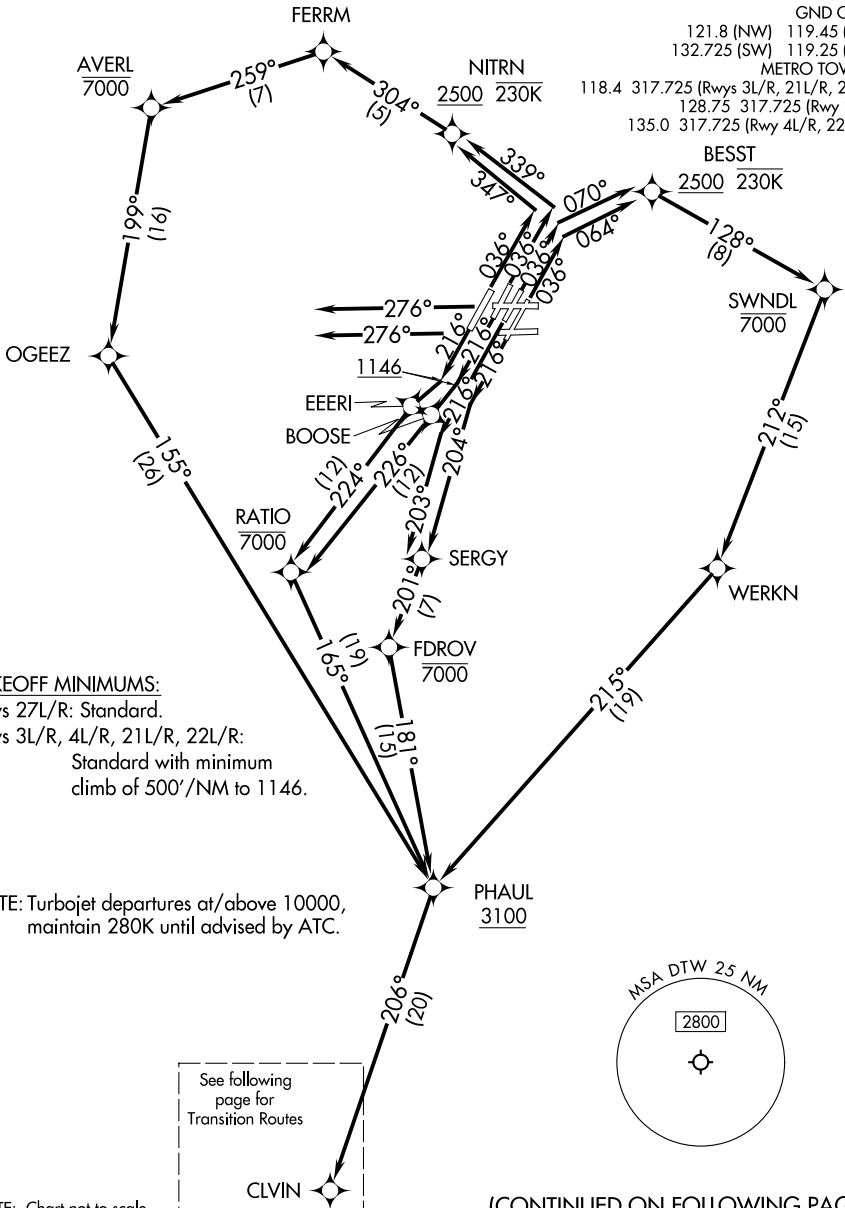


# CLVIN THREE DEPARTURE (RNAV) Departure Routes

**TOP ALTITUDE:**  
**17000**

RNAV 1 - DME/DME/IRU or GPS.  
RADAR required.

DETROIT DEP CON  
125.525 284.0 (Rwys 4L/R, 22L/R)  
132.025 284.0 (Rwys 3L/R, 21L/R, 27L/R)  
D-ATIS 118.125  
CLNC DEL 120.65  
CPDLC  
GND CON  
121.8 (NW) 119.45 (NE)  
132.725 (SW) 119.25 (SE)  
METRO TOWER  
118.4 317.725 (Rwys 3L/R, 21L/R, 27R)  
128.75 317.725 (Rwy 27L)  
135.0 317.725 (Rwy 4L/R, 22L/R)



**TAKEOFF MINIMUMS:**

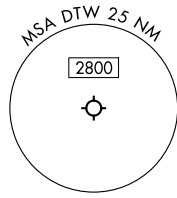
Rwys 27L/R: Standard.

Rwys 3L/R, 4L/R, 21L/R, 22L/R:

Standard with minimum  
climb of 500'/NM to 1146.

NOTE: Turbojet departures at/above 10000,  
maintain 280K until advised by ATC.

See following  
page for  
Transition Routes



NOTE: Chart not to scale.

(CONTINUED ON FOLLOWING PAGE)

EC-1, 19 MAR 2026 to 16 APR 2026

EC-1, 19 MAR 2026 to 16 APR 2026