

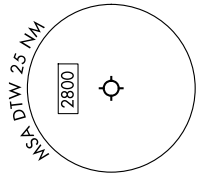
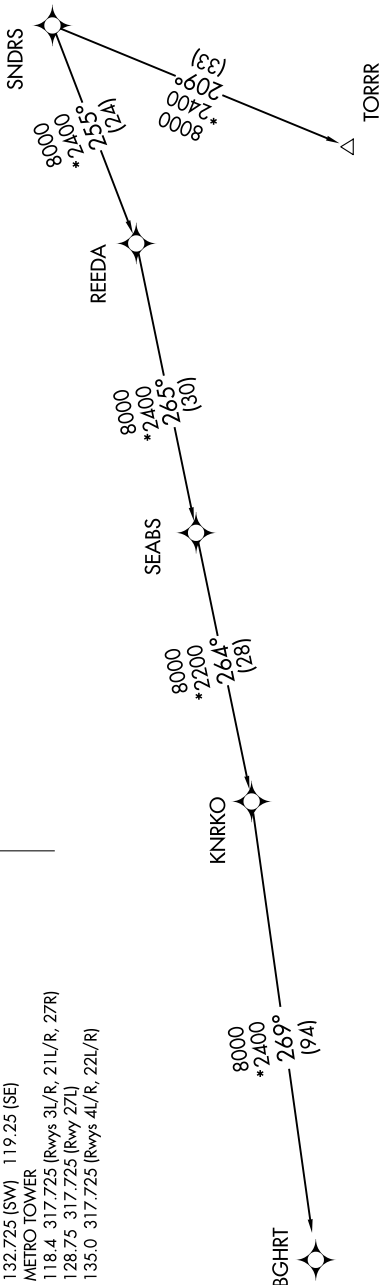
EC-1, 19 MAR 2026 to 16 APR 2026

**TOP ALTITUDE:**  
**17000**

RNAV-1 DME/DME/IRU or GPS.  
RADAR required.



DETROIT DEP CON  
 125.525 284.0 (Rwys 4L/R, 22L/R)  
 132.025 284.0 (Rwys 3L/R, 21L/R, 27L/R)  
 D-ATIS 118.125  
 CLNC DEL 120.65  
 CPDLC  
 GND CON  
 121.8 (NW) 119.45 (NE)  
 132.725 (SW) 119.25 (SE)  
 METRO TOWER  
 118.4 317.725 (Rwys 3L/R, 21L/R, 27R)  
 128.75 317.725 (Rwy 27L)  
 135.0 317.725 (Rwys 4L/R, 22L/R)



NOTE: Turbojet departures at/above 10000, maintain 280K until advised by ATC.  
 NOTE: TORRR Transition: For use by KIND and KCVG area arrivals only and flights filed at or below FL220, or as assigned by ATC.

TAKEOFF MINIMUMS:  
 Rwys 27L/R: Standard  
 Rwys 3L/R, 4L/R, 21L/R, 22L/R: Standard with minimum climb of 500' per NM to 1146.

NOTE: Chart not to scale.

(CONTINUED ON FOLLOWING PAGE)

EC-1, 19 MAR 2026 to 16 APR 2026