

# WYNDE THREE ARRIVAL (RNAV) Arrival Routes

EC-3, 19 MAR 2026 to 16 APR 2026

CHICAGO APP CON  
119.0 292.125  
D-ATIS  
135.4 282.225

RNAV 1 - DME/DME/IRU or GPS.
RADAR required.

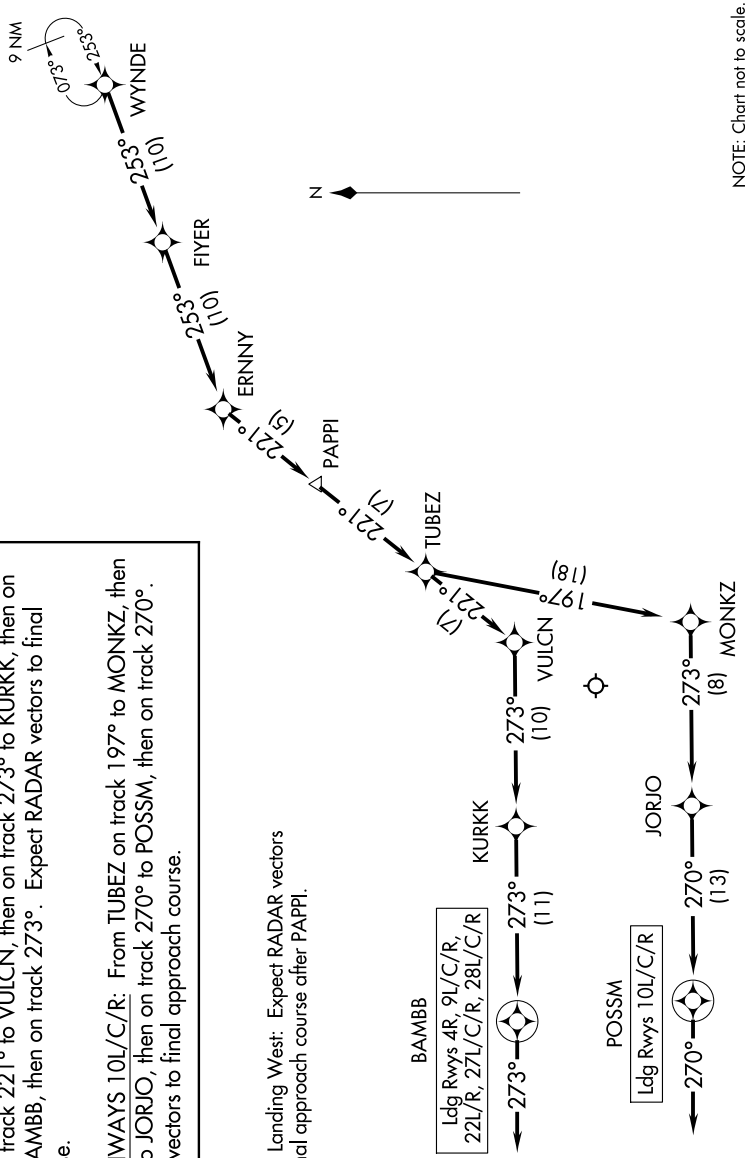
**ARRIVAL ROUTE DESCRIPTION**

From WYNDE on track 253° to FLYER, then on track 253° to ERNNY, then on track 221° to PAPPI, then on track 221° to TUBEZ.

**LANDING RUNWAYS 4R, 9L/C/R, 22L/R, 27L/C/R, 28L/C/R:**  
From TUBEZ on track 221° to VULCN, then on track 273° to KURKK, then on track 273° to BAMB, then on track 273°. Expect RADAR vectors to final approach course.

**LANDING RUNWAYS 10L/C/R:** From TUBEZ on track 197° to MONKZ, then on track 273° to JORJO, then on track 270° to POSSM, then on track 270°. Expect RADAR vectors to final approach course.

NOTE: ORD Landing West: Expect RADAR vectors to final approach course after PAPPI.



NOTE: Chart not to scale.

EC-3, 19 MAR 2026 to 16 APR 2026