

APP CRS	Rwy Ldg	8000
227°	TDZE	938
	Apt Elev	956

RNAV (GPS) RWY 23

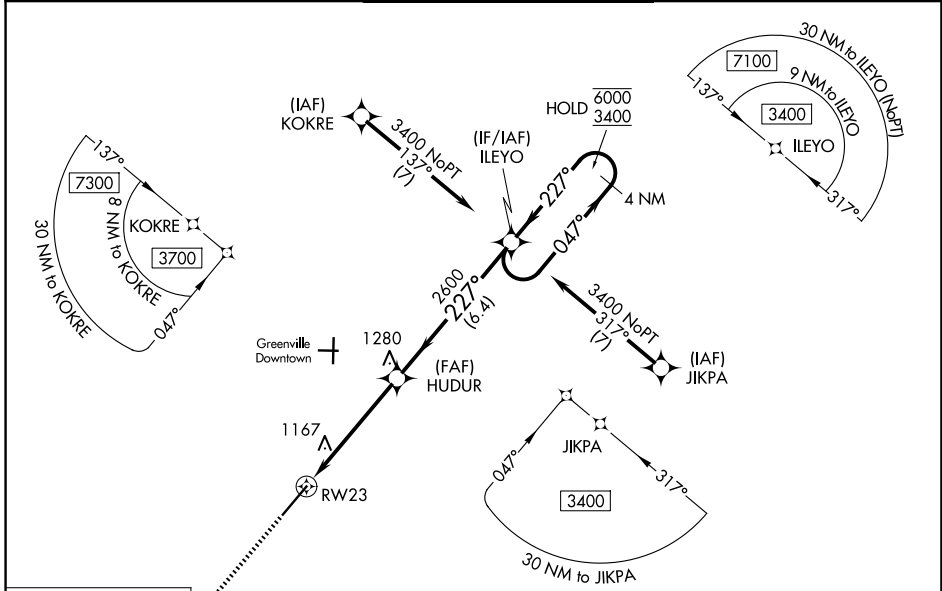
DONALDSON FLD (GYH)

RNP APCH - GPS.

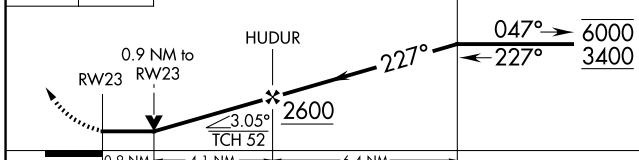
▼ Rwy 23 helicopter visibility reduction below 3/4 SM NA. When local altimeter setting not received, use Greer altimeter setting and increase all MDAs 40 feet and LNAV visibility Cat C/D 1/8 SM. VDP NA when using Greer altimeter setting.

MISSED APPROACH:
Climb to 3000 direct NINYI and hold.

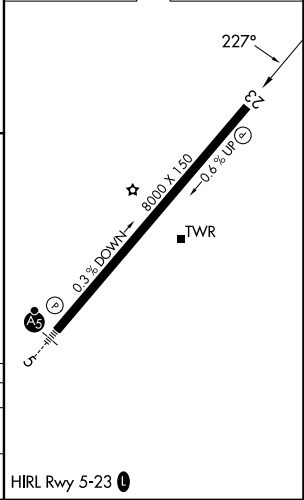
ATIS 127.325	GREER APP CON★ 118.8 270.275	DONALDSON TOWER★ 133.325 (CTAF) 269.25	GND CON 121.4	UNICOM 122.7
------------------------	--	--	-------------------------	------------------------



3000 NINYI
 ↑
 VGSI and descent angles not coincident (VGSI Angle 4.14/TCH 95).



ELEV 956	TDZE 938
----------	----------



CATEGORY	A	B	C	D
LNAV MDA	1420-1	482 (500-1)	1420-1 3/8	482 (500-1 3/8)
CIRCLING	1420-1 464 (500-1)	1480-1 524 (600-1)	1480-1 1/2 524 (600-1 1/2)	1520-2 564 (600-2)

HIRL Rwy 5-23

SE-2, 19 MAR 2026 to 16 APR 2026

SE-2, 19 MAR 2026 to 16 APR 2026