

WAAS CH 72603 W05A	APP CRS 047°	Rwy Ldg TDZE Apt Elev	8000 956 956
--	------------------------	-----------------------------	---

RNAV (GPS) RWY 5

DONALDSON FLD (GYH)

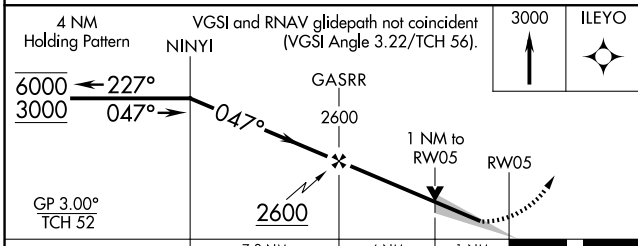
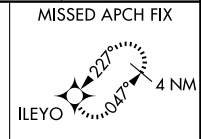
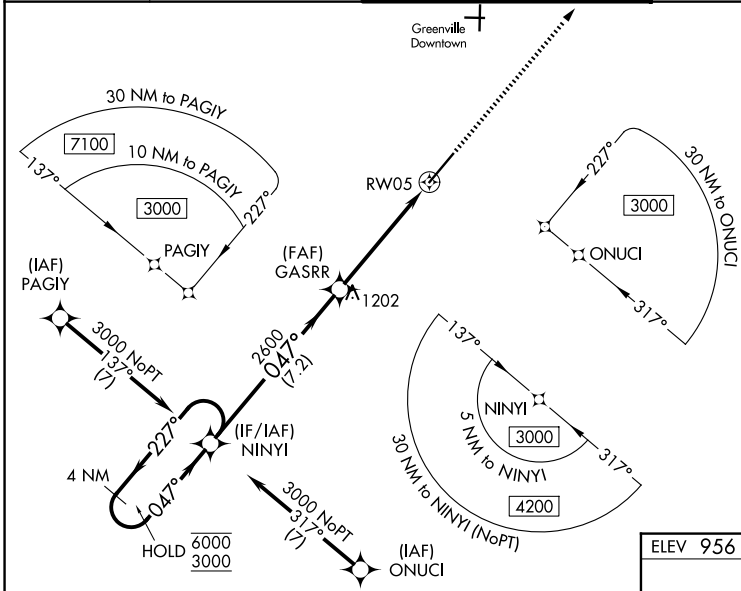
RNP APCH - GPS.

⚠ Baro-VNAV and VDP NA when using Greer altimeter setting. For uncompensated Baro-VNAV systems, LNAV/VNAV NA below -16°C or above 54°C. When local altimeter setting not received, use Greer altimeter setting and increase LPV DA to 1185 feet; increase LNAV/VNAV DA to 1279; increase all MDAs 40 feet and LNAV visibility Cats C and D 1/2 SM. For inop ALS, increase LNAV/VNAV visibility all Cats to 1/2 SM and increase LNAV visibility Cats C/D to 1 1/2 SM.

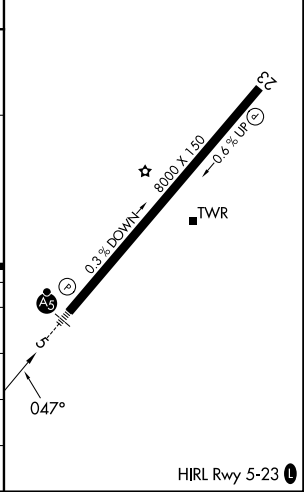


MISSED APPROACH:
Climb to 3000 direct
ILEYO and hold.

ATIS 127.325	GREER APP CON★ 118.8 270.275	DONALDSON TOWER★ 133.325 (CTAF) 0 269.25	GND CON 121.4	UNICOM 122.7
------------------------	--	--	-------------------------	------------------------



ELEV 956	TDZE 956
----------	----------



CATEGORY	A	B	C	D
LPV DA		1156-1/2	200 (200-1/2)	
LNAV/VNAV DA		1250-1/2	294 (300-1/2)	
LNAV MDA	1360-1/2	404 (500-1/2)	1360-3/4	404 (500-3/4)
CIRCLING	1420-1 464 (500-1)	1480-1 524 (600-1)	1480-1 1/2 524 (600-1 1/2)	1520-2 564 (600-2)

HIRL Rwy 5-23

SE-2, 19 MAR 2026 to 16 APR 2026