


LOC/DME I-OGD 111.7 Chan 54	APP CRS 034°	Rwy Ldg 7253 TDZE 4473 Apt Elev 4473
---	------------------------	---

ILS or LOC RWY 3

OGDEN-HINCKLEY (OGD)

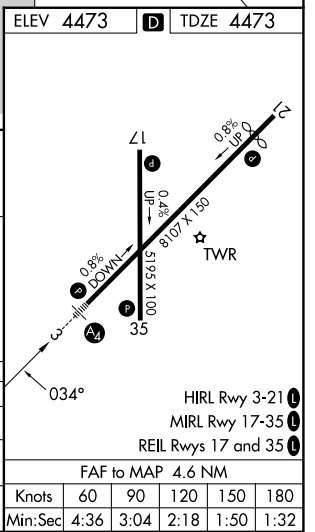
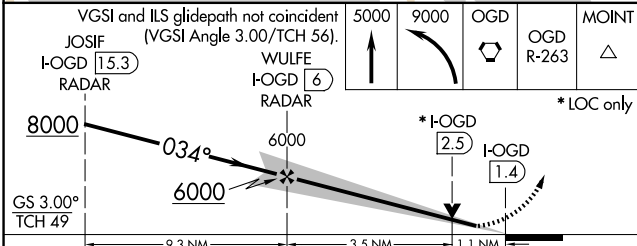
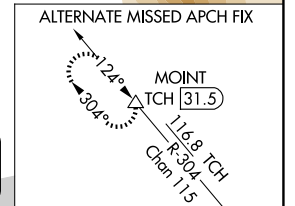
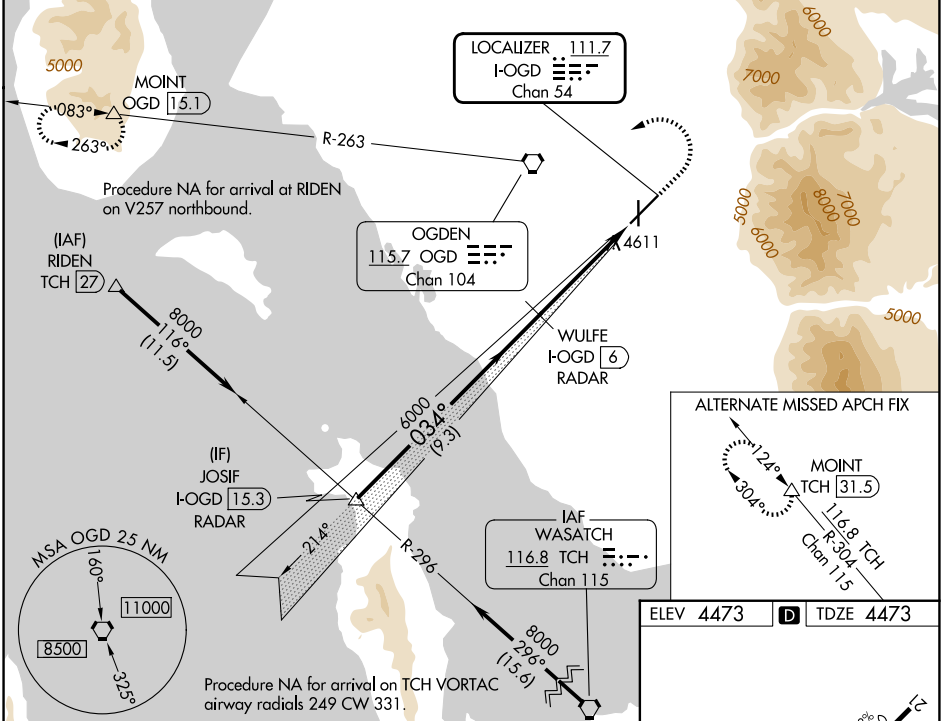
DME required. RADAR required for procedure entry.

⚠ Rwy 3 helicopter visibility reduction below 3/4 SM NA. For inop ALS, increase S-ILS 3 all Cats visibility to 3/8 SM. For inop ALS, increase S-LOC 3 Cat C/D visibility to 1 1/8 SM. Circling NA for Cats C and D east of Rwy 21 and 35.

MALS 

MISSED APPROACH: Climb to 5000 then climbing left turn to 9000 direct OGD VORTAC and on OGD VORTAC R-263 to MOINT/OGD 15.1 DME and hold, continue climb-in-hold to 9000.

ATIS 125.55	SALT LAKE CITY APP CON 121.1	OGDEN TOWER* 118.7 (CTAF) 0 253.5	GND CON 121.7	UNICOM 122.95
-----------------------	--	---	-------------------------	-------------------------



CATEGORY	A	B	C	D
S-ILS 3	4740-3/4 267 (300-3/4)			
S-LOC 3	4880-3/4	407 (500-3/4)	4880-1	407 (500-1)
CIRCLING	4980-1 507 (600-1)	5100-1 627 (700-1)	5100-1 3/4 627 (700-1 3/4)	5180-2 1/4 707 (800-2 1/4)

SW-4, 19 MAR 2026 to 16 APR 2026

SW-4, 19 MAR 2026 to 16 APR 2026