

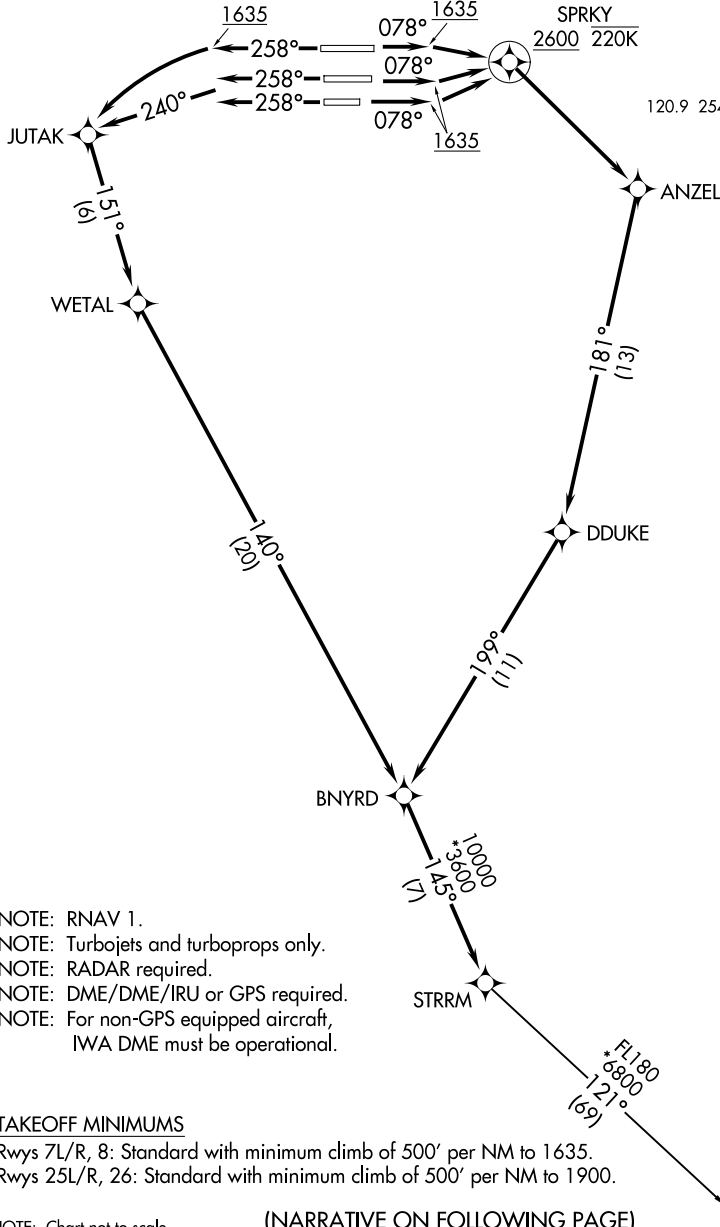
(STRM1.STRRM) 18144

STRM ONE DEPARTURE (RNAV)

AL-322 (FAA)

PHOENIX SKY HARBOR INTL (PHX)
PHOENIX, ARIZONA

**TOP ALTITUDE:
8000**



- NOTE: RNAV 1.
- NOTE: Turbojets and turboprops only.
- NOTE: RADAR required.
- NOTE: DME/DME/IRU or GPS required.
- NOTE: For non-GPS equipped aircraft, IWA DME must be operational.

TAKEOFF MINIMUMS

Rwys 7L/R, 8: Standard with minimum climb of 500' per NM to 1635.
 Rwys 25L/R, 26: Standard with minimum climb of 500' per NM to 1900.

NOTE: Chart not to scale.

(NARRATIVE ON FOLLOWING PAGE)

STRM ONE DEPARTURE (RNAV)

(STRM1.STRRM) 24MAY18

PHOENIX, ARIZONA
PHOENIX SKY HARBOR INTL (PHX)

SW-4, 19 MAR 2026 to 16 APR 2026

SW-4, 19 MAR 2026 to 16 APR 2026

D-ATIS 127.575
 CLNC DEL 118.1 269.2
 CPDLC 119.75 269.2 (NORTH)
 GND CON 132.55 269.2 (SOUTH)
 PHOENIX TOWER 118.7 278.8 (Rwys 8-26)
 PHOENIX DEP CON 120.9 254.3 (Rwys 7L-25R, 7R-25L)
 126.8 269.6