

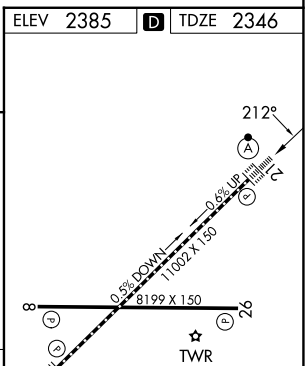
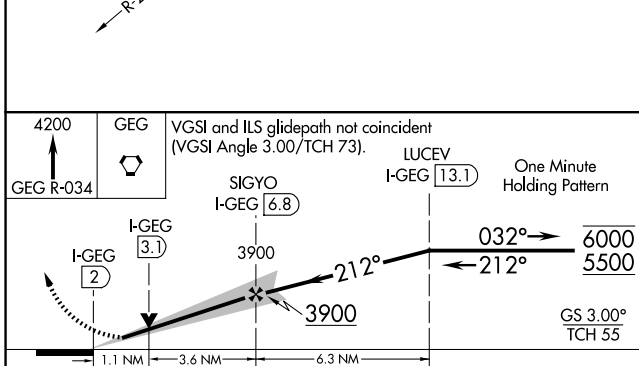
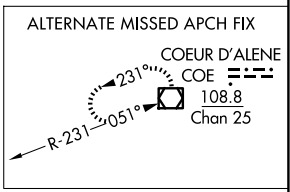
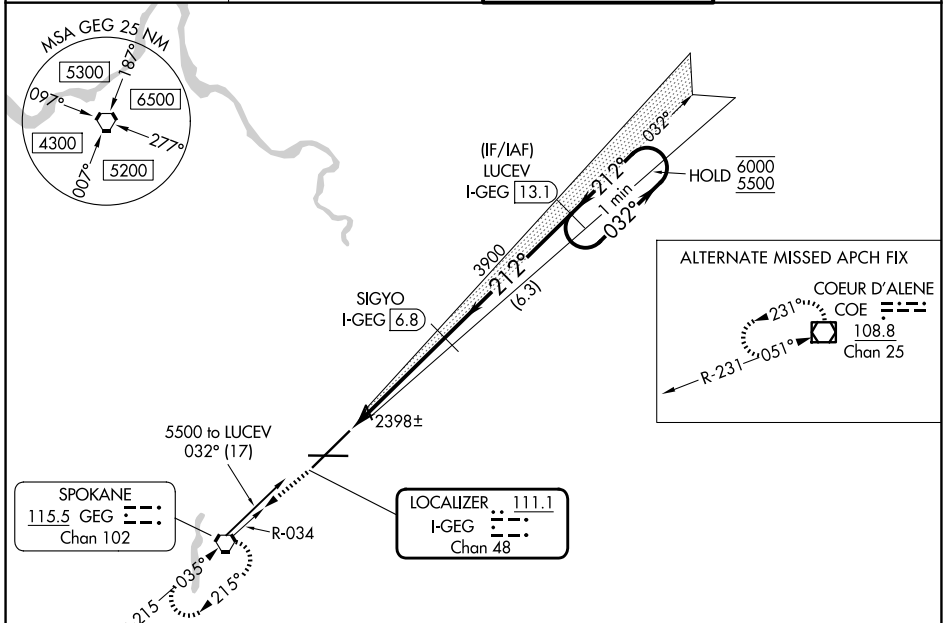
LOC/DME I-GEG 111.1 Chan 48	APP CRS 212°	Rwy Ldg 11002 TDZE 2346 Apt Elev 2385
---	------------------------	--

ILS or LOC RWY 21

SPOKANE INTL (GEG)

DME required.	ALSF-2 	MISSED APPROACH: Climb to 4200 on GEG VORTAC R-034 to GEG VORTAC and hold, continue climb-in-hold to 4200.
---------------	------------	--

ATIS 124.325 254.375	SPOKANE APP CON 123.75 282.25 (205°-025°) 133.35 263.0 (026°-204°)	SPOKANE TOWER 118.3 278.3	GND CON 121.9 348.6
--------------------------------	--	-------------------------------------	-------------------------------



CATEGORY	A	B	C	D
S-ILS 21	2546/18		200 (200-½)	
S-LOC 21	2760/24	414 (400-½)	2760/40	414 (400-¾)
CIRCLING	2960-1 575 (600-1)	2980-1 595 (600-1)	3180-2¼ 795 (800-2¼)	3380-3 995 (1000-3)

TDZL/RCLS Rwy 3 and 21
REIL Rwy 8 and 26
HIRL Rwy 3-21
MIRL Rwy 8-26

NW-1, 19 MAR 2026 to 16 APR 2026

NW-1, 19 MAR 2026 to 16 APR 2026