

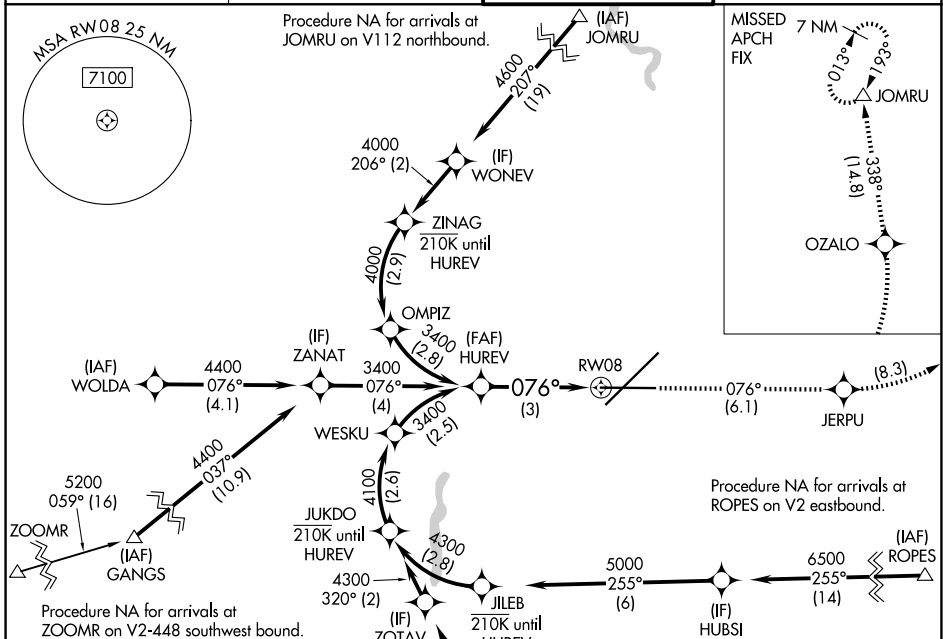
APP CRS	Rwy Ldg	8199
076°	TDZE	2376
	Apt Elev	2385

RNAV (RNP) Z RWY 8

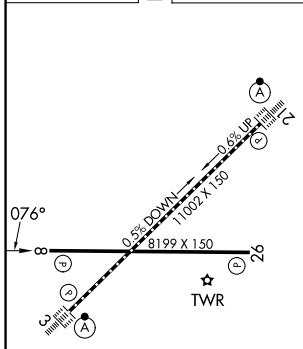
SPOKANE INTL (GEG)

RNP AR APCH. RF required.	MISSED APPROACH: Climb to 7000 on track 076° to JERPU, left turn to OZALO, and on track 338° to JOMRU and hold.
▼ For uncompensated Baro-VNAV systems, procedure NA below -18°C or above 53°C.	

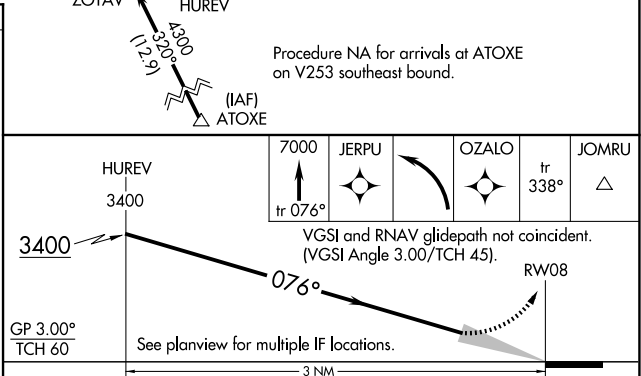
ATIS 124.325 254.375	SPOKANE APP CON 123.75 282.25 (205°-025°) 133.35 263.0 (026°-204°)	SPOKANE TOWER 118.3 278.3	GND CON 121.9 348.6
--------------------------------	--	-------------------------------------	-------------------------------



ELEV 2385	D	TDZE 2376
-----------	----------	-----------



TDZL/RCLS Rws 3 and 21
REIL Rws 8 and 26
HIRL Rwy 3-21
MIRL Rwy 8-26



CATEGORY	A	B	C	D
RNP 0.11 DA		2665-7/8	289 (300-7/8)	
RNP 0.30 DA		2869-1 3/8	493 (500-1 3/8)	

AUTHORIZATION REQUIRED

NW-1, 19 MAR 2026 to 16 APR 2026

NW-1, 19 MAR 2026 to 16 APR 2026