

WAAS CH 93501 W26A	APP CRS 257°	Rwy Ldg TDZE Apt Elev	8199 2372 2385
---------------------------------	------------------------	-----------------------------	---

RNAV (GPS) Y RWY 26

SPOKANE INTL (GEG)

RNP APCH.
 ⚠ Rwy 26 helicopter visibility reduction below 3/4 SM NA.
 ⚠ For uncompensated Baro-VNAV systems, LNAV/VNAV NA below -18°C or above 54°C.

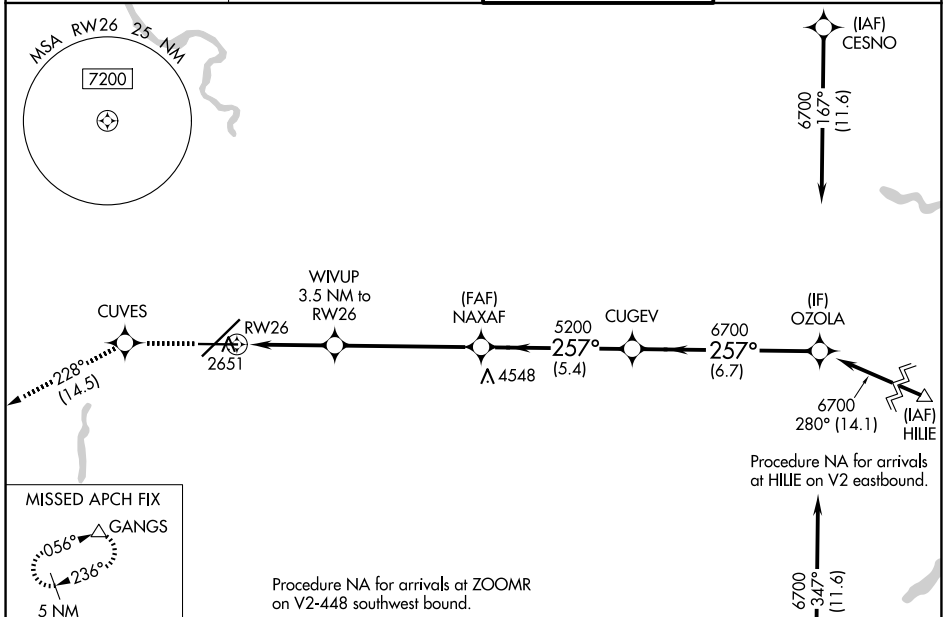
MISSED APPROACH: Climb to 5000 direct CUVES and on track 228° to GANGS and hold.

ATIS
124.325 254.375

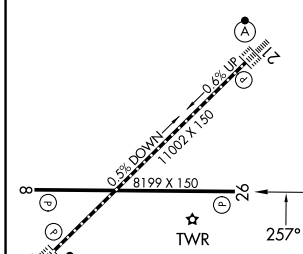
SPOKANE APP CON
123.75 282.25 (205°-025°)
133.35 263.0 (026°-204°)

SPOKANE TOWER
118.3 278.3

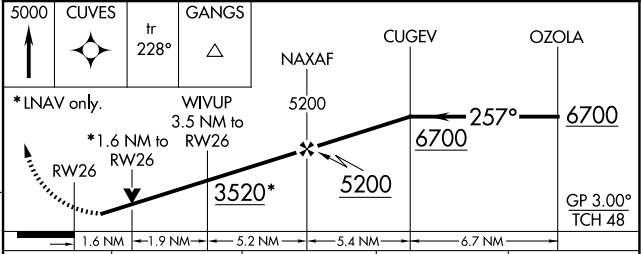
GND CON
121.9 348.6



ELEV 2385	D	TDZE 2372
-----------	----------	-----------



TDZL/RCLS Rws 3 and 21
 REIL Rws 8 and 26
 HIRL Rwy 3-21
 MIRL Rwy 8-26



CATEGORY	A	B	C	D
LPV DA	2688-1		316 (400-1)	
LNAV/VNAV DA	2911-1½		539 (600-1½)	
LNAV MDA	2920-1	548 (600-1)	2920-1½	548 (600-1½)
CIRCLING	2960-1 575 (600-1)	2980-1 595 (600-1)	3300-2¾ 915 (1000-2¾)	3400-3 1015 (1100-3)

NW-1, 19 MAR 2026 to 16 APR 2026

NW-1, 19 MAR 2026 to 16 APR 2026