

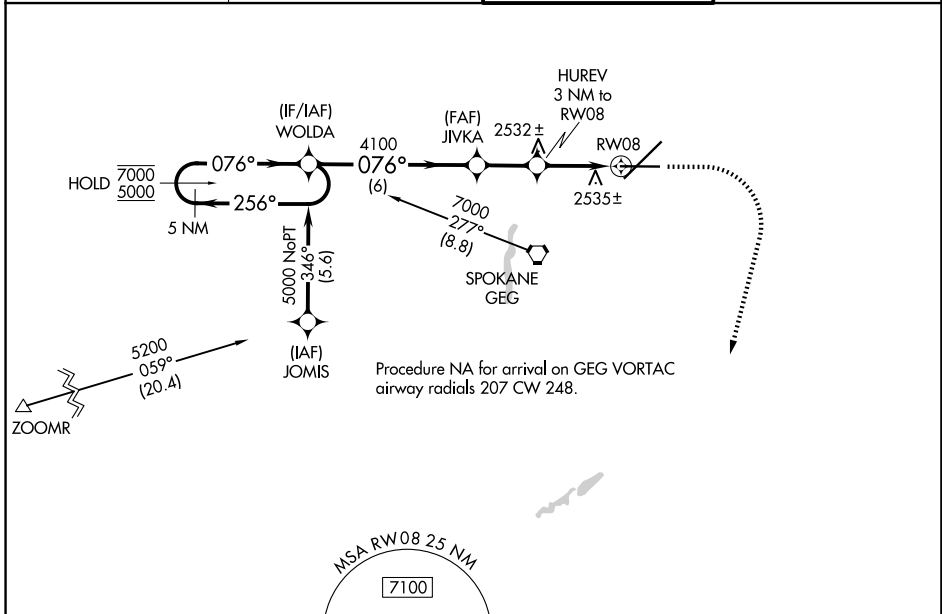
WAAS CH 48801 W08A	APP CRS 076°	Rwy Ldg TDZE Apt Elev	8199 2376 2385
----------------------------------------	------------------------	-----------------------------	-------------------------------------------

RNAV (GPS) Y RWY 8

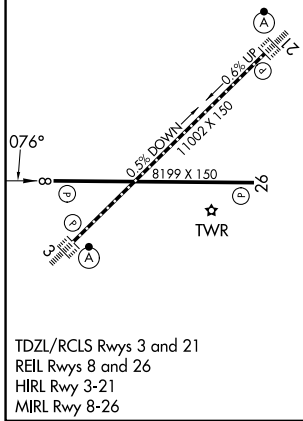
SPOKANE INTL (GEG)

RNP APCH.	MISSED APPROACH: Climb to 2900, then climbing right turn to 6000 direct ATOXE and hold.
<p>▼ For uncompensated Baro-VNAV systems, LNAV/VNAV NA below -18°C or above 52°C.</p> <p>▲</p>	

ATIS 124.325 254.375	SPOKANE APP CON 123.75 282.25 (205°-025°) 133.35 263.0 (026°-204°)	SPOKANE TOWER 118.3 278.3	GND CON 121.9 348.6
--------------------------------	----------------------------------------------------------------------------------------	-------------------------------------	-------------------------------



ELEV 2385	D	TDZE 2376
-----------	----------	-----------



VGSI and RNAV glidepath not coincident (VGSI Angle 3.00/TCH 45).		2900	6000	ATOXE
5 NM Holding Pattern		↑	↷	△
WOLDA	JIVKA	HUREV 3 NM to RW08	1.2 NM to RW08	
7000	4100	4100	3400	
5000	256°	076°		
	076°			
GP 3.00° TCH 60				
	6 NM	2.1 NM	1.8 NM	1.2
CATEGORY	A	B	C	D
LPV DA	2576-3/4 200 (200-3/4)			
LNAV/VNAV DA	2834-1 1/2 458 (500-1 1/2)			
LNAV MDA	2800-1	424 (500-1)	2800-1 1/4	424 (500-1 1/4)

NW-1, 19 MAR 2026 to 16 APR 2026

NW-1, 19 MAR 2026 to 16 APR 2026