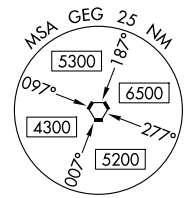
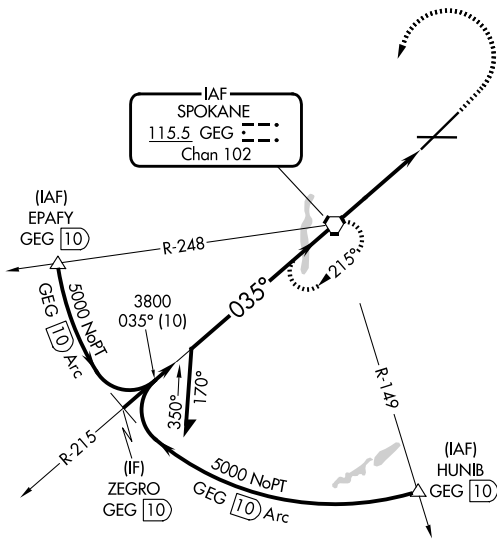


VORTAC GEG <b>115.5</b> Chan 102	APP CRS <b>035°</b>	Rwy Ldg <b>11002</b> TDZE <b>2385</b> Aprt Elev <b>2385</b>
----------------------------------------	------------------------	-------------------------------------------------------------------

# VOR RWY 3

SPOKANE INTL (GEG)

Circling NA for Cat E southeast of Rwy 3-21. For inop ALS, increase S-3 Cat E visibility to 1 1/4 SM.		MISSED APPROACH: Climb to 3200 then climbing left turn to 4200 direct GEG VORTAC and hold, continue climb-in-hold to 4200.	
		ATIS <b>124.325 254.375</b>	SPOKANE APP CON <b>123.75 282.25 (205°-025°)</b> <b>133.35 263.0 (026°-204°)</b>



ELEV 2385	<b>D</b>	TDZE 2385
-----------	----------	-----------

4200

3200

4200

GEG

0.5% DOWN

11002 X 150

8199 X 150

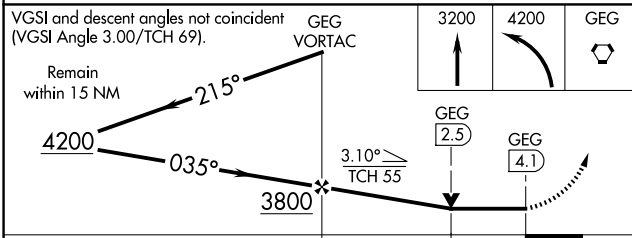
TWR

035°

TDZL/RCLS Rws 3 and 21  
REIL Rws 8 and 26  
HIRL Rwy 3-21  
MRL Rwy 8-26

FAF to MAP 4.1 NM

Knots	60	90	120	150	180
Min:Sec	4:06	2:44	2:03	1:38	1:22



CATEGORY	A	B	C	D	E
S-3	2980/24	595 (600-1/2)	2980-1 1/4 595 (600-1 1/4)		
CIRCLING	2980-1	595 (600-1)	3180-2 1/4 795 (800-2 1/4)	3380-3 995 (1000-3)	

NW-1, 19 MAR 2026 to 16 APR 2026

NW-1, 19 MAR 2026 to 16 APR 2026