

LOC/DME I-ALI <b>109.3</b> Chan <b>30</b>	APP CRS <b>308°</b>	Rwy Idg <b>5997</b> TDZE <b>174</b> Apt Elev <b>178</b>
---	------------------------	---

# LOC/DME RWY 31

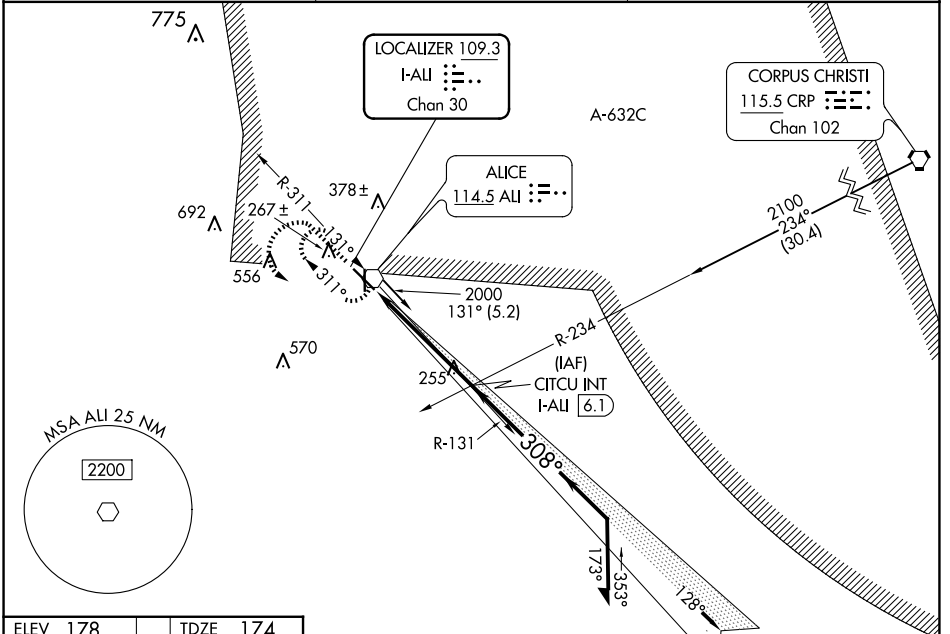
ALICE INTL (ALI)

**RADAR required for procedure entry from Corpus Christi CRP VORTAC.**

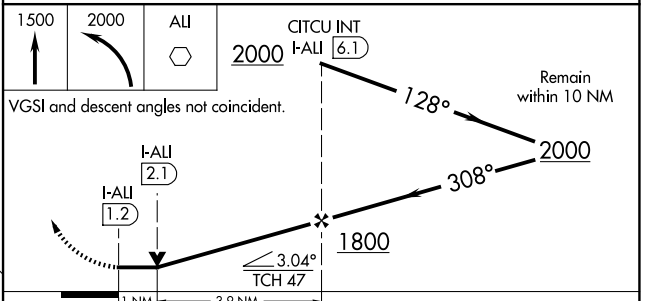
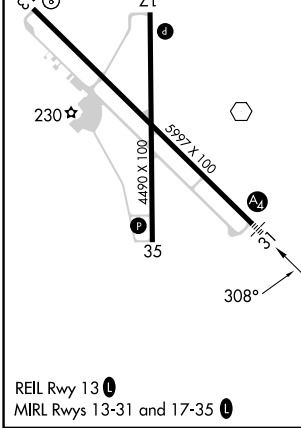
▼ VDP NA when using Nueces County altimeter setting. When local altimeter setting not received, use Nueces County altimeter setting and increase all MDAs 60 feet and S-LOC 31 visibility Cat C/D ¼ SM, and Circling visibility Cat D ¼ SM. For inop ALS when using Nueces County altimeter setting, increase S-31 Cats C, D visibility to 1½ SM.

MALS MISSED APPROACH: Climb to 1500 then climbing left turn to 2000 on direct ALI VOR and hold.

ASOS <b>119.225</b>	KINGSVILLE APP CON * <b>119.9 290.45</b>	UNICOM <b>123.0 (CTAF)</b>
------------------------	---	-------------------------------



ELEV <b>178</b>	TDZE <b>174</b>
-----------------	-----------------



CATEGORY	A	B	C	D
S-31		520-¾	346 (400-¾)	
CIRCLING	600-1 422 (500-1)	640-1 462 (500-1)	700-1½ 522 (600-1½)	900-2¼ 722 (800-2¼)

SC-3, 19 MAR 2026 to 16 APR 2026

SC-3, 19 MAR 2026 to 16 APR 2026