

APCH CRS 046°	Rwy Idg 15,017
	TDZE 2302
	Arprt Elev 2310

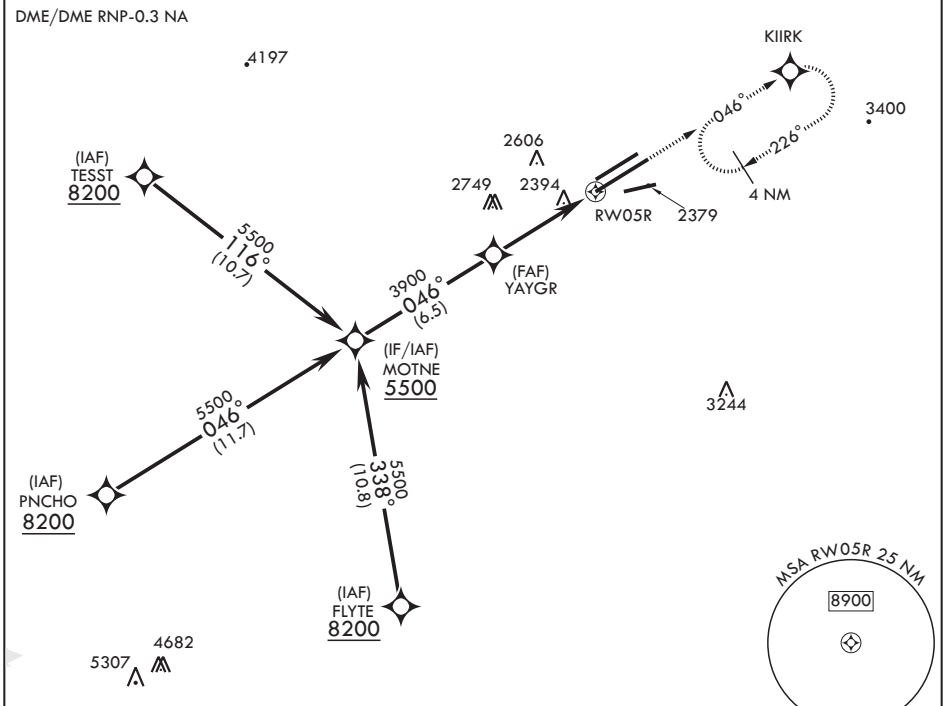
(USAF)

EDWARDS AFB (KEDW)

▽ * Circling not authorized NW of Rwy 5L-23R. MISSED APPROACH: Climb to 5700 direct KIIRK and hold, continue climb-in-hold to 5700.

ATIS* 127.425 269.9	JOSHUA APP CON/DEP CON 133.65 348.7	TOWER* 120.7 (CTAF) 318.1 (CTAF)	GND CON 121.8 225.4
-------------------------------	---	--	-------------------------------

For uncompensated Baro VNAV systems, procedure NA below -19°C (-2°F) or above 54°C (130°F).



EMERG SAFE ALT 100 NM 16,500

VGSI and descent angles not coincident.

5700

ELEV 2310

TDZE 2302

2680

CATEGORY	A	B	C	D	E
LNAV/VNAV DA	2820-1 ³ / ₈		517	(600-1 ³ / ₈)	
LNAV MDA	2820-1	517 (600-1)	2820-1 ³ / ₈	517 (600-1 ³ / ₈)	
CIRCLING*	2880-1 569 (600-1)		2880-1 ¹ / ₂ 569 (600-1 ¹ / ₂)	2880-2 569 (600-2)	

SW-3, 19 MAR 2026 to 16 APR 2026

SW-3, 19 MAR 2026 to 16 APR 2026