

EDWARDS, CALIFORNIA

# VOR/DME or TACAN Y RWY 23L

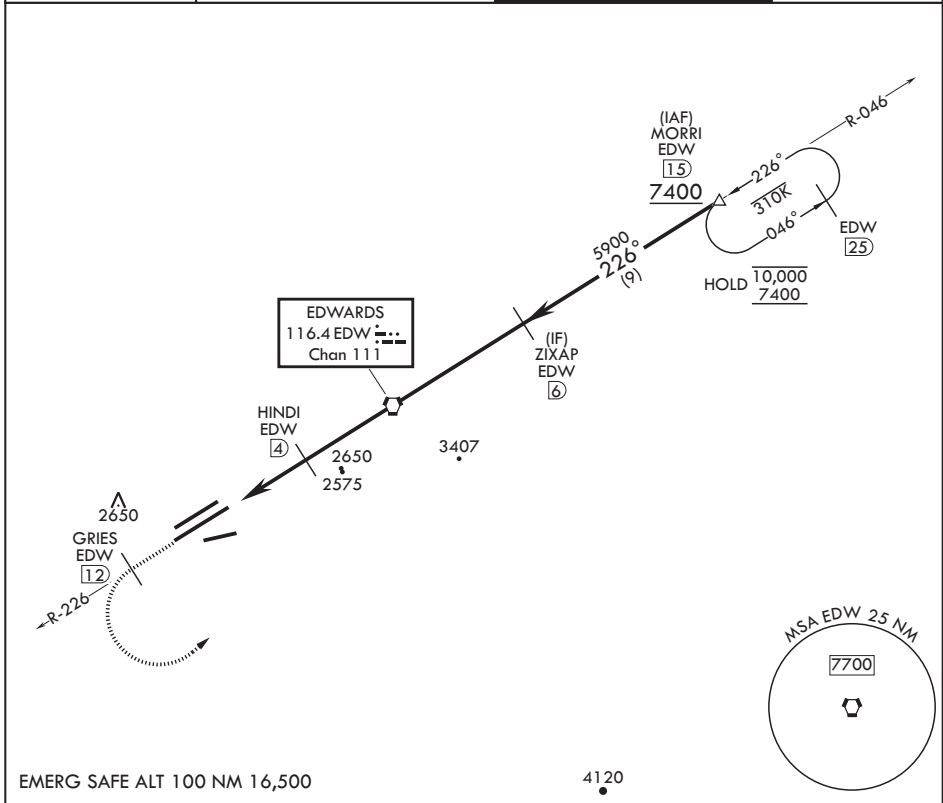
VORTAC EDW 116.4 Chan 111	APCH CRS 226°	Rwy Idg 15,017	TDZE 2286
		Arprt Elev 2310	

(USAF)

EDWARDS AFB (KEDW)

**⚠** \* Circling not authorized NW of Rwy 5L-23R. Circling not authorized at night to Rwy 5L-23R. MISSED APPROACH: Climb to 7400. Track EDW VORTAC R-226 outbound to GRIES, then turn left direct MORRI and hold. Missed Approach requires use of RNAV or ATC RADAR monitoring.

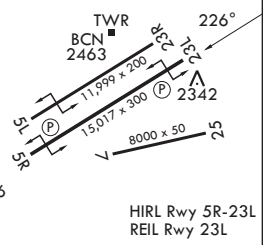
ATIS ★ 127.425 269.9	JOSHUA APP CON/DEP CON 133.65 348.7	TOWER ★ 120.7 (CTAF) 318.1 (CTAF)	GND CON 121.8 225.4
-------------------------	--	--------------------------------------	------------------------



EMERG SAFE ALT 100 NM 16,500

4120

7400 EDW R-226	GRIES EDW 12	MORRI EDW 15	MORRI EDW 15	ELEV 2310	TDZE 2286
<p>VGSI and descent angles not coincident (VGSI Angle 3.00/TCH 49).</p>					
CATEGORY	A	B	C	D	E
S-23L	2640-1		354	(400-1)	
CIRCLING*	2880-1	569 (600-1)	2880-1½ 569 (600-1½)	2880-2	569 (600-2)
<p>EDWARDS, CALIFORNIA 34°54'N - 117°53'W EDWARDS AFB (KEDW)</p> <p>Amdt 2 23APR20</p> <p>VOR/DME or TACAN Y RWY 23L</p>					



SW-3, 19 MAR 2026 to 16 APR 2026

SW-3, 19 MAR 2026 to 16 APR 2026