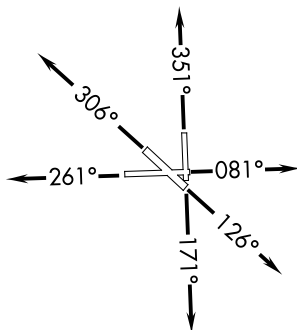
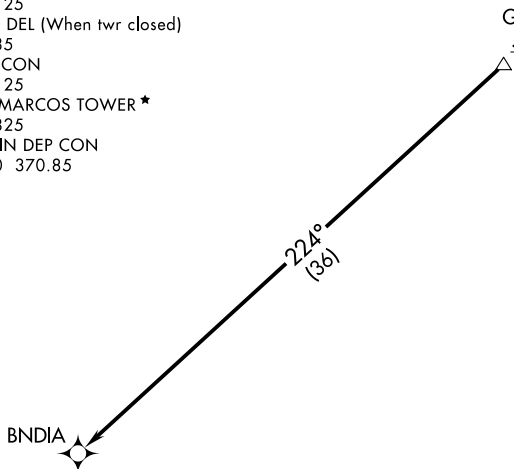


BNDIA THREE DEPARTURE (RNAV)

**TOP ALTITUDE:
ASSIGNED BY ATC**

ATIS
 120.825
 CLNC DEL
 120.125
 CLNC DEL (When twr closed)
 121.35
 GND CON
 120.125
 SAN MARCOS TOWER ★
 126.825
 AUSTIN DEP CON
 119.0 370.85

GARDS
5000



NOTE: RADAR required.
 NOTE: DME/DME/IRU or GPS required.
 NOTE: RNAV 1.

TAKEOFF MINIMUMS:

Rwys 8, 13, 17, 26: Standard.
 Rwy 31: Standard with minimum climb of 210' per NM to 2600.
 Rwy 35: Standard with minimum climb of 230' per NM to 2600.

NOTE: Chart not to scale.

DEPARTURE ROUTE DESCRIPTION

- TAKEOFF RUNWAY 8:** Climb on heading 081° or as assigned by ATC for vectors to cross GARDS at or above 5000, thence....
- TAKEOFF RUNWAY 13:** Climb on heading 126° or as assigned by ATC for vectors to cross GARDS at or above 5000, thence....
- TAKEOFF RUNWAY 17:** Climb on heading 171° or as assigned by ATC for vectors to cross GARDS at or above 5000, thence....
- TAKEOFF RUNWAY 26:** Climb on heading 261° or as assigned by ATC for vectors to cross GARDS at or above 5000, thence....
- TAKEOFF RUNWAY 31:** Climb on heading 306° or as assigned by ATC for vectors to cross GARDS at or above 5000, thence....
- TAKEOFF RUNWAY 35:** Climb on heading 351° or as assigned by ATC for vectors to cross GARDS at or above 5000, thence....

....on track 224° to BNDIA. Maintain altitude assigned by ATC. Expect filed altitude 10 minutes after departure.