

WAAS CH 77832 W17A	APP CRS 171°	Rwy Ldg 5214 TDZE 595 Apt Elev 595
--	------------------------	---

RNAV (GPS) RWY 17

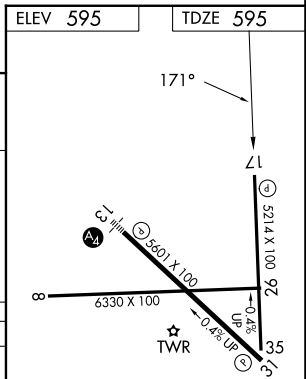
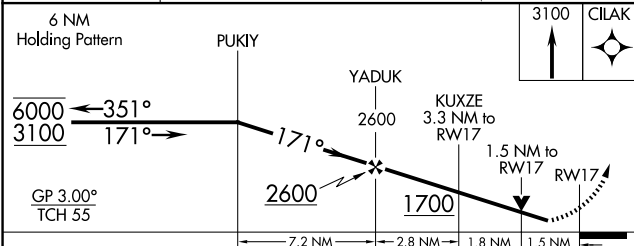
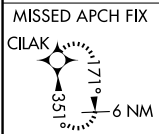
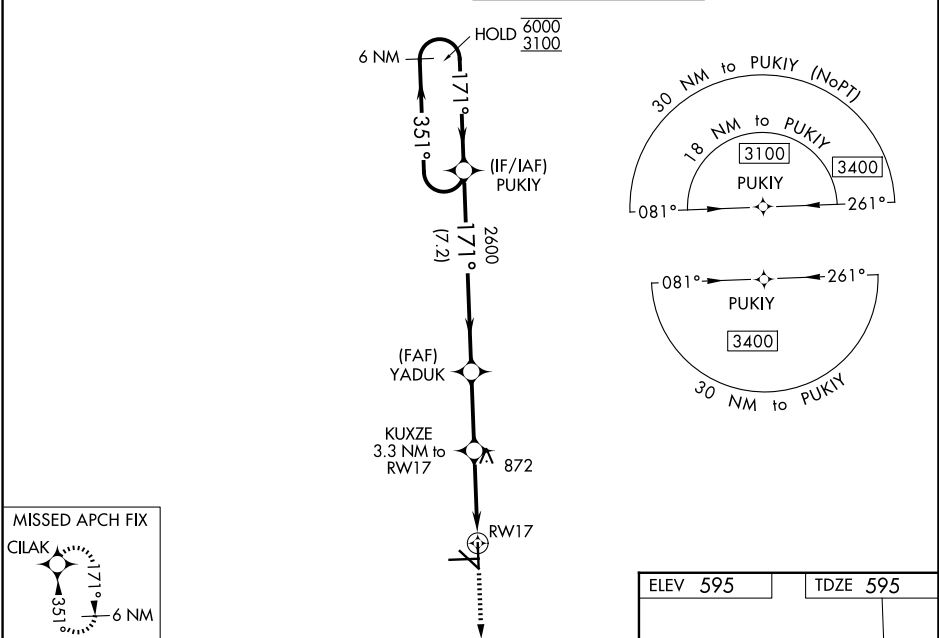
SAN MARCOS RGNL (HYI)

RNP APCH - GPS.

⚠ Circling NA for Cat E southwest of Rwy 13-31. For uncompensated Baro-VNAV systems, LNAV/VNAV NA below -16°C or above 54°C. Baro-VNAV and VDP NA when using BAZ altimeter setting. Rwy 17 helicopter visibility reduction below 3/4 SM NA. When local altimeter setting not received, use BAZ altimeter setting and increase LPV DA to 1003 feet and all visibilities 1/8 SM; increase LNAV/VNAV DA to 1095 feet; increase all MDAs 60 feet and LNAV visibility Cats C/D/E 1/8 SM, and Circling visibility Cats C/D 1/4 SM.

MISSED APPROACH:
Climb to 3100 direct
CILAK and hold.

ATIS 120.825	AUSTIN APP CON 119.0 370.85	SAN MARCOS TOWER ★ 126.825 (CTAF) 0	GND CON 120.125
------------------------	---------------------------------------	--	---------------------------



CATEGORY	A	B	C	D	E
LPV DA		960-1	365 (400-1)		
LNAV/VNAV DA		1052-1 3/8	457 (500-1 3/8)		
LNAV MDA	1140-1	545 (600-1)	1140-1 5/8	545 (600-1 5/8)	
CIRCLING	1140-1	545 (600-1)	1240-1 1/4 645 (700-1 3/4)	1320-2 1/4 725 (800-2 1/4)	1340-2 3/4 745 (800-2 3/4)

MIRL Rwy 8-26, 13-31, and 17-35 **0**

SC-3, 19 MAR 2026 to 16 APR 2026

SC-3, 19 MAR 2026 to 16 APR 2026