

RNAV (RNP) Z RWY 12

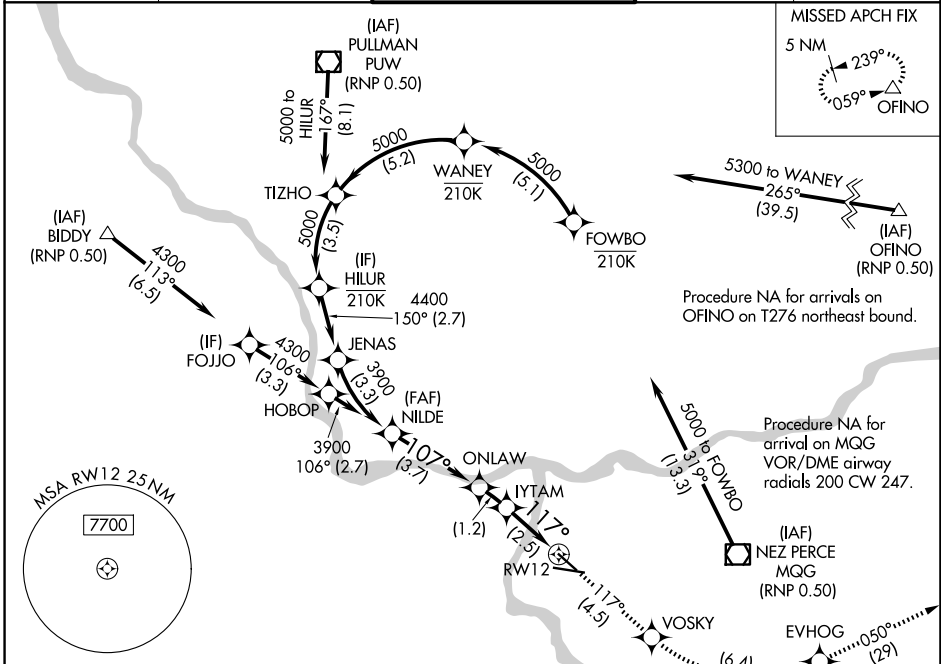
LEWISTON/NEZ PERCE COUNTY (LWS)

APP CRS	Rwy Ldg	4750
117°	TDZE	1417
	Apt Elev	1442

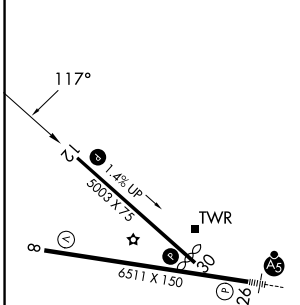
RNP AR APCH-GPS.
 ▼ For uncompensated Baro-VNAV systems, procedure NA below -12°C or above 54°C.

MISSED APPROACH: Climb to 6000 on track 117° to VOSKY then left turn 6000 to EVHOG and on track 050° to OFINO and hold.
 *Missed approach requires minium climb of 260 feet per NM to 3400.

ASOS 135.575	SEATTLE CENTER 123.95 290.55	LEWISTON TOWER ★ 119.4 (CTAF) 0 318.8	GND CON 121.9	UNICOM 122.95
------------------------	--	---	-------------------------	-------------------------



ELEV 1442	D	TDZE 1417
------------------	----------	------------------



- REIL Rwy 8
- REIL Rwy 12
- HIRL Rwy 8-26
- MIRL Rwy 12-30

6000 tr 117°	VOSKY	6000	EVHOG	tr 050°	OFINO
-----------------	-------	------	-------	---------	-------

ONLAW IYTAM RW12
 VGS1 and RNAV glidepath not coincident (VGS1 Angle 3.00/TCH 40).

GP 3.10° TCH 56	See Planview for multiple IF locations.	2659	2254	117°
		3.7 NM	1.2	2.5 NM

CATEGORY	A	B	C	D
RNP 0.30 DA*		1685-7 ⁷ / ₈	268 (300-7 ⁷ / ₈)	
RNP 0.30 DA		1889-1 ¹ / ₈	472 (500-1 ¹ / ₈)	

AUTHORIZATION REQUIRED

NW-1, 19 MAR 2026 to 16 APR 2026

NW-1, 19 MAR 2026 to 16 APR 2026