

APP CRS	Rwy Ldg	<b>6511</b>
<b>084°</b>	TDZE	<b>1440</b>
	Apt Elev	<b>1442</b>

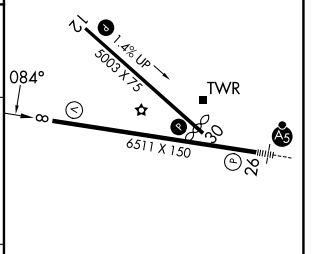
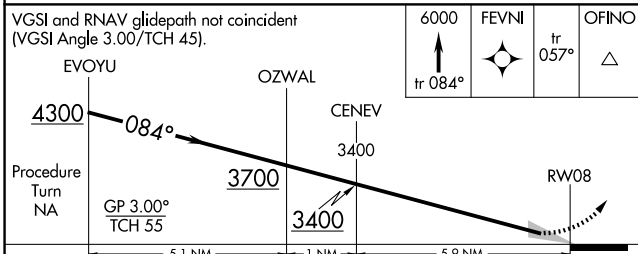
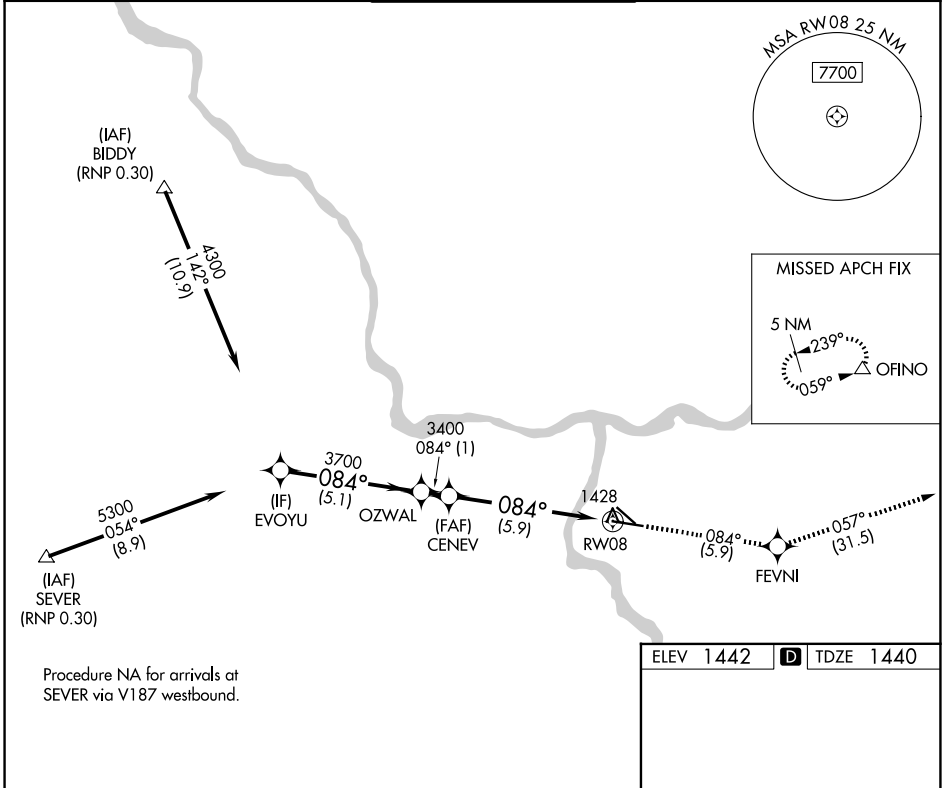
# RNAV (RNP) Z RWY 8

LEWISTON/NEZ PERCE COUNTY (LWS)

**GPS required.** For uncompensated Baro-VNAV systems, procedure NA below -16°C (3°F) or above 46°C (115°F). When VGSI inop, procedure NA at night.

**MISSED APPROACH:** Climb to 6000 via track 084° to FEVNI and via track 057° to OFINO and hold.

ASOS <b>135.575</b>	SEATTLE CENTER <b>123.95 290.55</b>	LEWISTON TOWER ★ <b>119.4 (CTAF) 0 318.8</b>	GND CON <b>121.9</b>	UNICOM <b>122.95</b>
------------------------	--	---	-------------------------	-------------------------



CATEGORY	A	B	C	D
RNP 0.30 DA	1752-1 312 (400-1)			

**AUTHORIZATION REQUIRED**

REIL Rwy 8 **1**  
 REIL Rwy 12  
 HIRL Rwy 8-26  
 MIRL Rwy 12-30

NW-1, 19 MAR 2026 to 16 APR 2026

NW-1, 19 MAR 2026 to 16 APR 2026