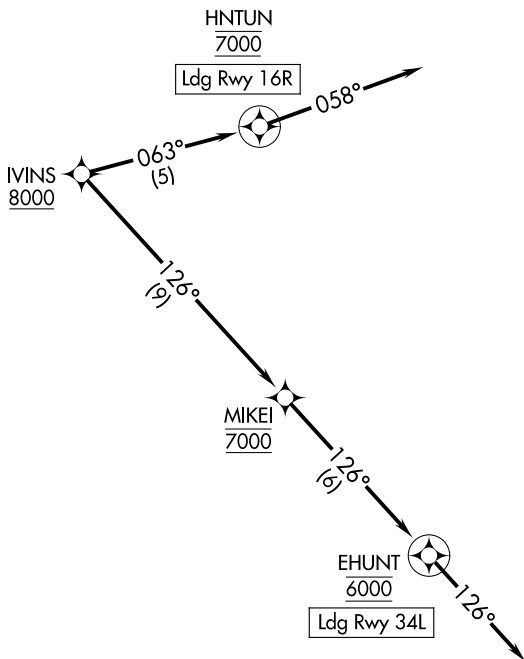


# IVINS TWO ARRIVAL (RNAV) Arrival Routes

SOCAL APP CON  
128.75 381.55  
ATIS  
127.55  
VAN NUYS TOWER\*  
119.3 239.0

RNAV 1 - DME/DME/IRU or GPS.  
RADAR required.



SW-3, 19 MAR 2026 to 16 APR 2026

SW-3, 19 MAR 2026 to 16 APR 2026

NOTE: Expect Rwy 16R unless otherwise assigned by ATC.

NOTE: Chart not to scale.

### ARRIVAL ROUTE DESCRIPTION

LANDING RUNWAY 16R: From IVINS on track 063° to cross HNTUN at 7000, then on track 058°. Expect RADAR vectors to final approach course.

LANDING RUNWAY 34L: From IVINS on track 126° to cross MIKEI at 7000, then on track 126° to cross EHUNT at 6000, then on track 126°. Expect RADAR vectors to final approach course.