

LOC I-GPT 110.9	APP CRS 137°	Rwy Ldg TDZE Apt Elev	9002 27 28
---------------------------	------------------------	-----------------------------	---------------------------------------

ILS Z or LOC Z RWY 14

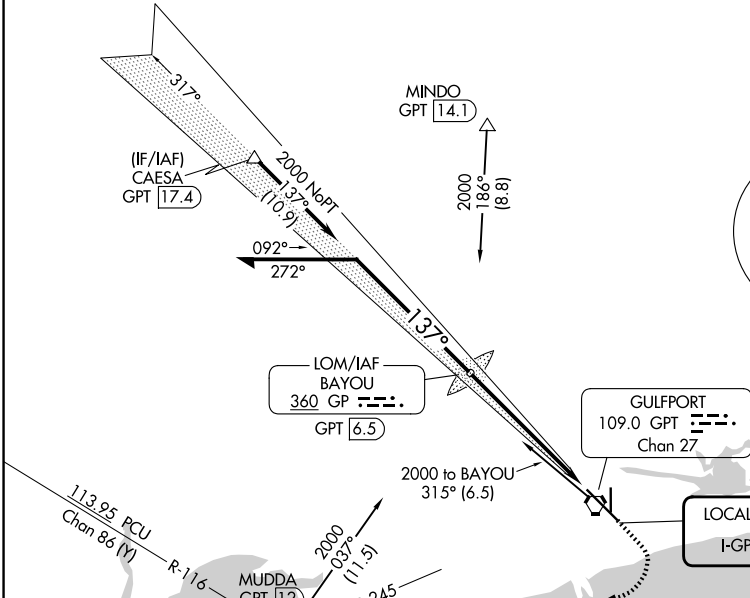
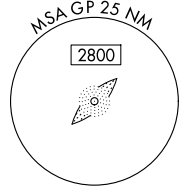
GULFPORT-BILOXI INTL (GPT)

<p>▼ For inop ALS, increase S-ILS 14 Cat E visibility to RVR 4000 and S-LOC 14 Cat E visibility to 1½ SM.</p> <p>▲ ASR **RVR 1800 authorized with use of FD or AP or HUD to DA.</p>	<p>MALS</p>	<p>MISSED APPROACH: Climb to 500 then climbing right turn to 2000 on GPT VORTAC R-245 to MUDDA INT/12 DME and hold.</p>
--	--------------------	--

ATIS 119.45	GULFPORT APP CON ★ 127.5 254.25	GULFPORT TOWER ★ 123.7 (CTAF) 0 339.8	GND CON 120.4 348.6	UNICOM 122.95
-----------------------	---	---	-------------------------------	-------------------------

Procedure NA for arrivals at CAESA on V552 westbound.

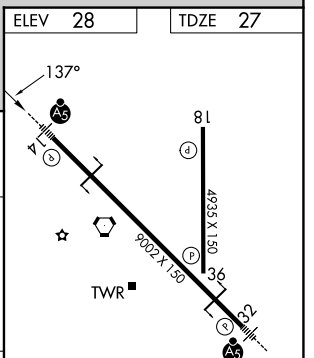
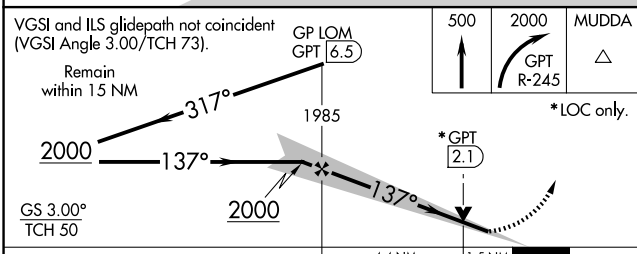
ALTERNATE MISSED APCH FIX



SC-4, 19 MAR 2026 to 16 APR 2026

SC-4, 19 MAR 2026 to 16 APR 2026

ELEV 28	TDZE 27
---------	---------



CATEGORY	A	B	C	D	E	
S-ILS 14**	227/24 200 (200-½)					
S-LOC 14	560/24	533 (600-½)	560/55		533 (600-1)	
CIRCLING	560-1 532 (600-1)	640-1 612 (700-1)	820-2¼ 792 (800-2¼)	820-2½ 792 (800-2½)	820-2¾ 792 (800-2¾)	
	Knots					60 90 120 150 180
	Min:Sec					5:54 3:56 2:57 2:22 1:58

HIRL Rwy 14-32
MIRL Rwy 18-36
FAF to MAP 5.9 NM