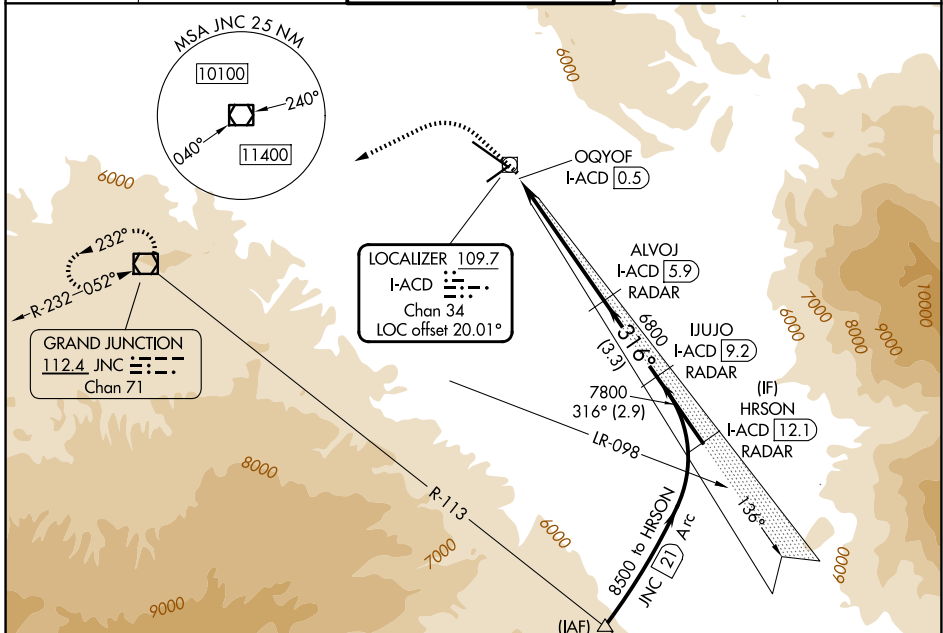


LOC/DME I-ACD 109.7 Chan 34	APP CRS 316°	Rwy Ldg TDZE Apt Elev 9339 4861 4861
--	------------------------	--

LDA RWY 29
GRAND JUNCTION RGNL (GJT)

DME required.	MISSED APPROACH: Climb to 7500 on heading 304° then climbing left turn direct JNC VOR/DME and hold, continue climb-in-hold to 11000.
<p>▼ Circling NA for Cat D north of Rwy 11-29.</p> <p>▲ Autopilot coupled approach NA inside 2.0 DME.</p>	

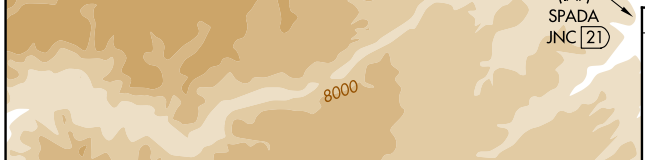
ATIS 118.55	DENVER APP CON * 119.7 317.4	GRAND JUNCTION TOWER * 118.1 (CTAF) 0 257.8	GND CON 121.7 257.8	UNICOM 122.95
-----------------------	--	---	-------------------------------	-------------------------



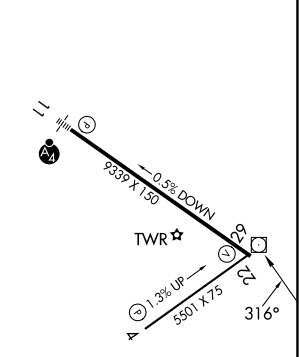
SW-1, 19 MAR 2026 to 16 APR 2026

SW-1, 19 MAR 2026 to 16 APR 2026

ELEV 4861	D	TDZE 4861
-----------	---	-----------



7500 ↑ hdg 304°	JNC □	Use I-ACD DME when on the localizer course.	IUJUO I-ACD [9.2] RADAR	HRSON I-ACD [12.1] RADAR
			ALVOJ I-ACD [5.9] RADAR	
			OQYOF I-ACD [0.5]	
			≤ 3.00° TCH 51	
			6800	8500
			7800	
			4.4 NM	3.3 NM
			1 NM	2.9 NM
			0.5	



CATEGORY	A	B	C	D
S-29	5400-1	539 (600-1)	5400-1½	539 (600-1½)
CIRCLING	5400-1 539 (600-1)	5520-1 659 (700-1)	5840-3	979 (1000-3)

HIRL Rwy 11-29
MIRL Rwy 4-22
REIL Rws 4, 22 and 29