

(NOKXI2.NOKXI) 24137

# NOKXI TWO DEPARTURE (RNAV)

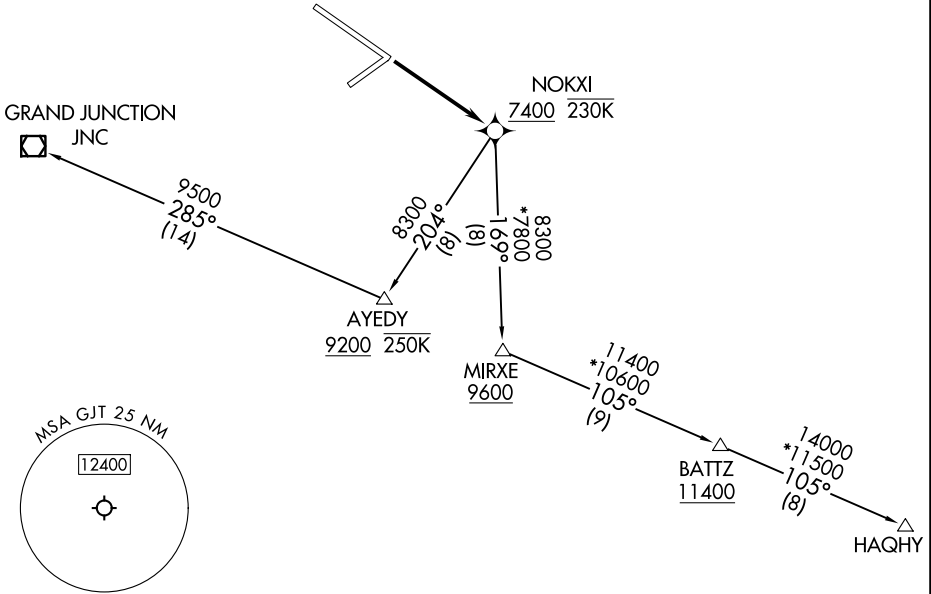
AL-634 (FAA)

GRAND JUNCTION RGNL (GJT)  
GRAND JUNCTION, COLORADO

**TOP ALTITUDE:  
ASSIGNED BY ATC**

RNAV 1 - GPS.

DENVER DEP CON \*  
119.7 317.4  
ATIS  
118.55  
GND CON  
121.7 257.8  
GRAND JUNCTION TOWER \*  
118.1 257.8  
UNICOM  
122.95



SW-1, 19 MAR 2026 to 16 APR 2026

SW-1, 19 MAR 2026 to 16 APR 2026

### TAKEOFF MINIMUMS

Rwys 4, 22, 29: NA - Environmental.  
Rwy 11: Standard with minimum climb of 500'/NM to 5361.

NOTE: GRAND JUNCTION Transition: Do not exceed 250K until AYEDY.

NOTE: Chart not to scale.



### DEPARTURE ROUTE DESCRIPTION

TAKEOFF RUNWAY 11: Climb direct NOKXI, thence. . . .

. . . .(transition). Maintain ATC assigned altitude, expect filed altitude 10 minutes after departure.

GRAND JUNCTION TRANSITION (NOKXI2.JNC)

HAQHY TRANSITION (NOKXI2.HAQHY)

NOKXI TWO DEPARTURE (RNAV)  
(NOKXI2.NOKXI) 16MAY24

GRAND JUNCTION, COLORADO  
GRAND JUNCTION RGNL (GJT)