

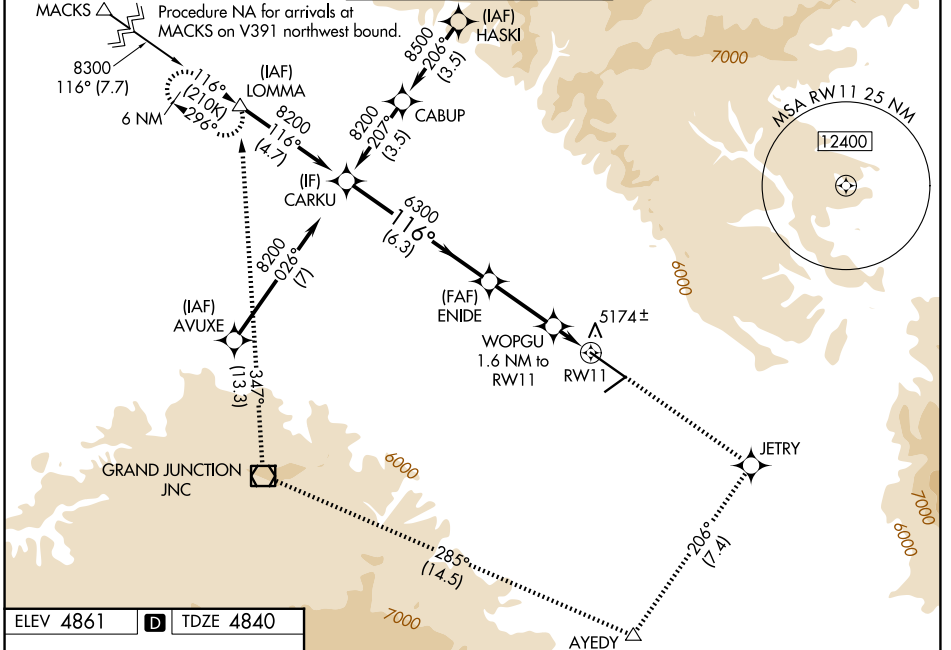
WAAS CH 97514 W11A	APP CRS 116°	Rwy Ldg TDZE Apt Elev	9339 4840 4861
----------------------------------------	------------------------	-----------------------------	-------------------------------------------

RNAV (GPS) Y RWY 11

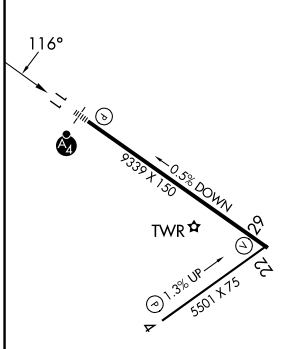
GRAND JUNCTION RGNL (GJT)

RNP APCH - GPS.	MALSF	MISSED APPROACH: Climb to 6700 direct JETRY then climbing right turn to 9000 on track 206° to AYEDY and track 285° to JNC VOR/DME and track 347° to LOMMA and hold. *Missed approach requires minimum climb of 206 feet per NM to 7740.
<p>⚠ Circling NA for Cat D north of Rwy 11-29. For uncompensated Baro-VNAV systems, LNAV/VNAV NA below -17°C or above 54°C. For inop ALS, increase LPV all Cats visibility to RVR 4500 and increase LNAV Cat C/D visibility to 1$\frac{1}{2}$. Inop table does not apply to LPV*.</p>		

ATIS 118.55	DENVER APP CON * 119.7 317.4	GRAND JUNCTION TOWER * 118.1 (CTAF) 0 257.8	GND CON 121.7 257.8	UNICOM 122.95
-----------------------	----------------------------------------	-------------------------------------------------------	-------------------------------	-------------------------

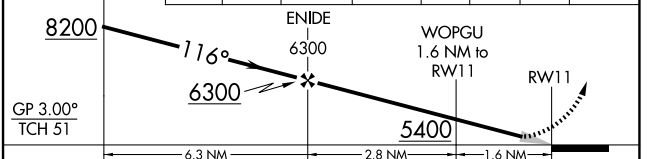


ELEV 4861	D	TDZE 4840
-----------	----------	-----------



HIRL Rwy 11-29
MIRL Rwy 4-22
REIL Rwy 4, 22 and 29

CARKU	6700	JETRY	9000	AYEDY	JNC	LOMMA
↑	✧	↷	△	tr 285°	tr 347°	△



CATEGORY	A	B	C	D
LPV DA*		5040/40	200 (200- $\frac{3}{4}$)	
LPV DA		5120/40	280 (300- $\frac{3}{4}$)	
LNAV/VNAV DA		5317/60	477 (500-1 $\frac{1}{4}$)	
LNAV MDA*	5280/40	440 (500- $\frac{3}{4}$)	5280/50	440 (500-1)
LNAV MDA	5360/40	520 (500- $\frac{3}{4}$)	5360-1 $\frac{1}{4}$	520 (500-1 $\frac{1}{4}$)
CIRCLING	5380-1 519 (600-1)	5520-1 659 (700-1)	5840-3	979 (1000-3)

SW-1, 19 MAR 2026 to 16 APR 2026

SW-1, 19 MAR 2026 to 16 APR 2026