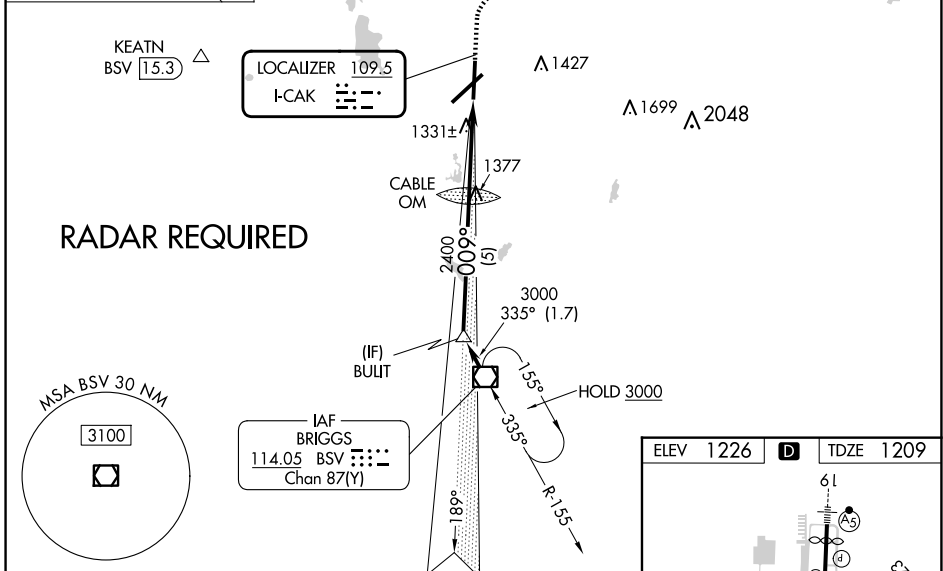
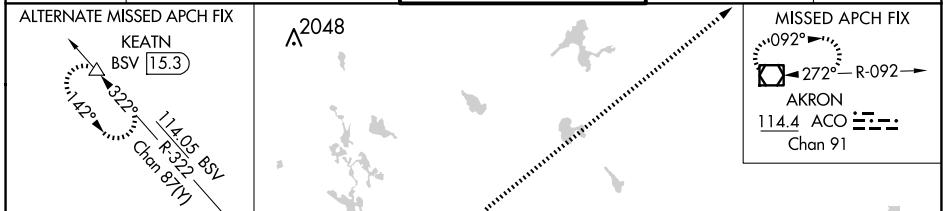


LOC I-CAK <b>109.5</b>	APP CRS <b>009°</b>	Rwy Idg TDZE Apt Elev	<b>7007</b> <b>1209</b> <b>1226</b>
---------------------------	------------------------	-----------------------------	---

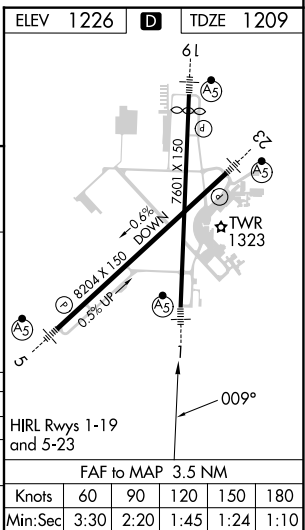
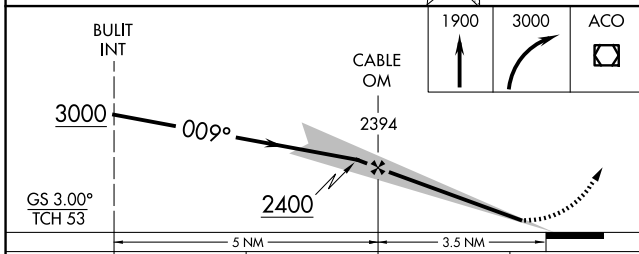
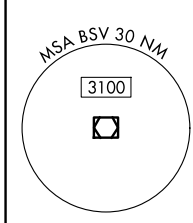
**ILS or LOC RWY 1**  
AKRON-CANTON RGNL (CAK)

<b>▽</b> ** RVR 1800 authorized with the use of FD or AP or HUD to DA.		MALS R 	MISSED APPROACH: Climb to 1900 then climbing right turn to 3000 direct ACO VOR/DME and hold.	
--	--	------------	--	--

ATIS <b>121.05</b>	CLEVELAND APP CON * <b>125.5 269.25</b>	AKRON-CANTON TOWER <b>134.75 279.575</b>	GND CON <b>121.7 348.6</b>	CLNC DEL <b>132.05</b>
-----------------------	--	---	-------------------------------	---------------------------



**RADAR REQUIRED**



CATEGORY	A	B	C	D
S-ILS 1 **	1409/24		200 (200-½)	
S-LOC 1	1600/24		391 (400-½)	
CIRCLING	1760-1	534 (600-1)	1780-1½	1800-2
			554 (600-1½)	574 (600-2)

EC-2, 19 MAR 2026 to 16 APR 2026

EC-2, 19 MAR 2026 to 16 APR 2026

ELEV 1226		D		TDZE 1209	
Knots	60	90	120	150	180
Min:Sec	3:30	2:20	1:45	1:24	1:10