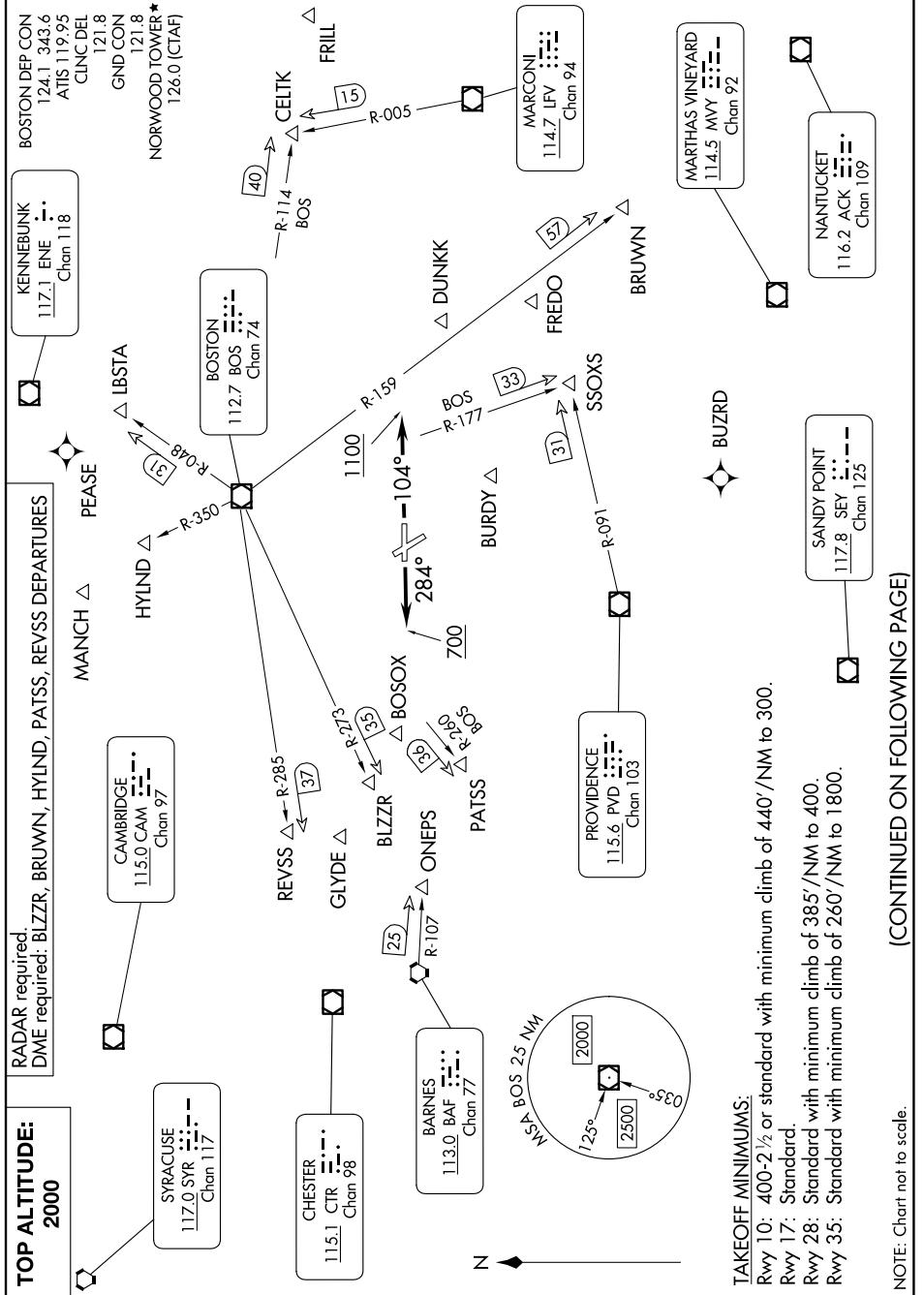


NORWOOD FIVE DEPARTURE

NE-1, 19 MAR 2026 to 16 APR 2026



TOP ALTITUDE:
2000

RADAR required
DME required: BLZZR, BRUNN, HYLAND, PATSS, REUSS DEPARTURES

TAKEOFF MINIMUMS:
 Rwy 10: 400-2 1/2 or standard with minimum climb of 440'/NM to 300.
 Rwy 17: Standard.
 Rwy 28: Standard with minimum climb of 385'/NM to 400.
 Rwy 35: Standard with minimum climb of 260'/NM to 1800.

NOTE: Chart not to scale.

(CONTINUED ON FOLLOWING PAGE)

NE-1, 19 MAR 2026 to 16 APR 2026

NORWOOD FIVE DEPARTURE