

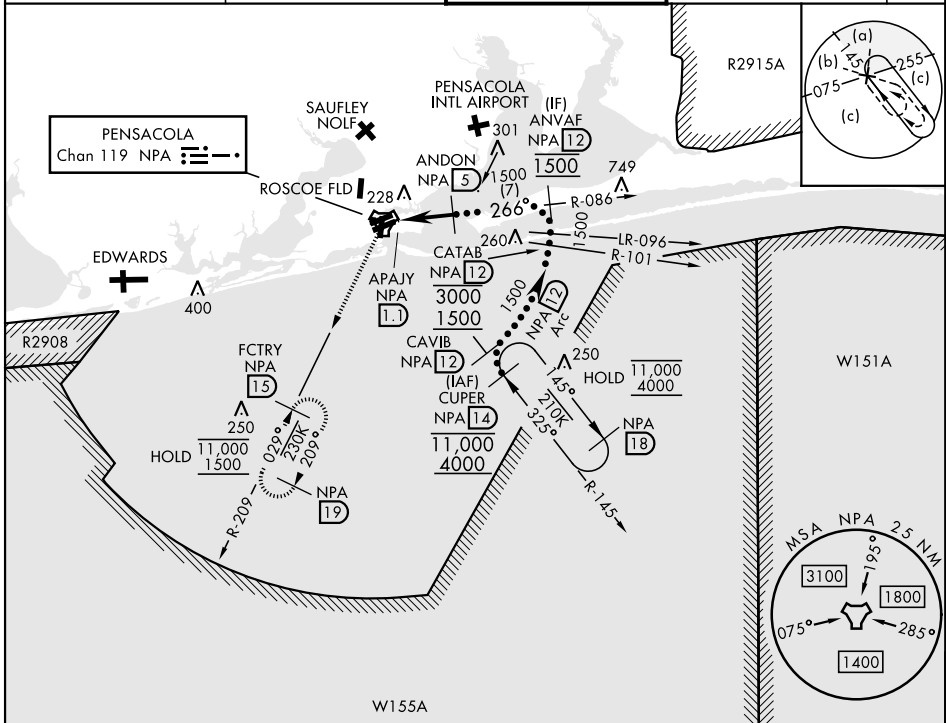
HI-TACAN Z RWY 25L

TACAN NPA Chan 119	APCH CRS 266°	Rwy ldg TDZE 8000 22 Arprt Elev 28
-----------------------	------------------	--

[USN] PENSACOLA NAS (FORREST SHERMAN FLD) (KNPA)

RADAR required	MISSED APPROACH: Climbing left turn to 1500 via NPA TACAN R-209 to FCTRY and hold.
----------------	--

ATIS 124.35 266.8	PENSACOLA APP CON 120.65 270.8	SHERMAN TOWER 120.7 340.2	GND CON 121.7 336.4	ASR/PAR
----------------------	-----------------------------------	------------------------------	------------------------	---------

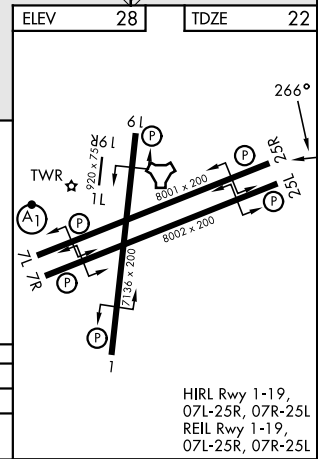
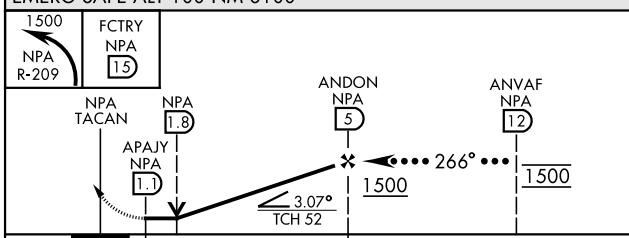


SE-3, 19 MAR 2026 to 16 APR 2026

SE-3, 19 MAR 2026 to 16 APR 2026

ELEV	28	TDZE	22
------	----	------	----

EMERG SAFE ALT 100 NM 3100



HIRL Rwy 1-19, 07L-25R, 07R-25L
REIL Rwy 1-19, 07L-25R, 07R-25L

PENSACOLA, FLORIDA 30°21'N-87°19'W PENSACOLA NAS (FORREST SHERMAN FLD) (KNPA)

Amdt 1 12JUN25

HI-TACAN Z RWY 25L