

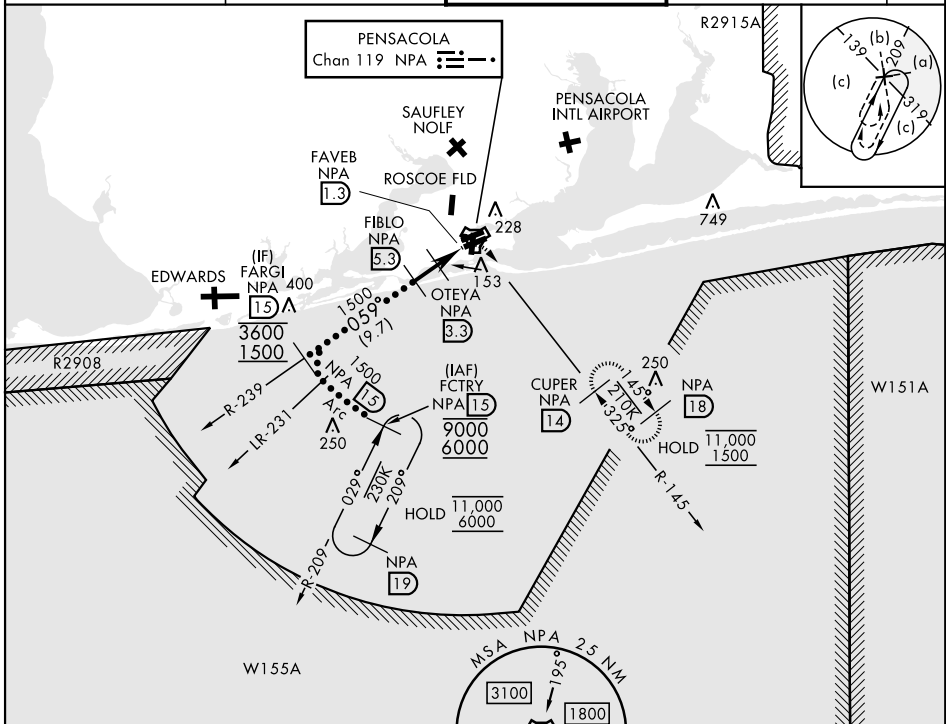
HI-TACAN Z RWY 7R

TACAN NPA Chan 119	APCH CRS 059°	Rwy Idg 8000	TDZE 25	Arprt Elev 28
-----------------------	------------------	-----------------	------------	------------------

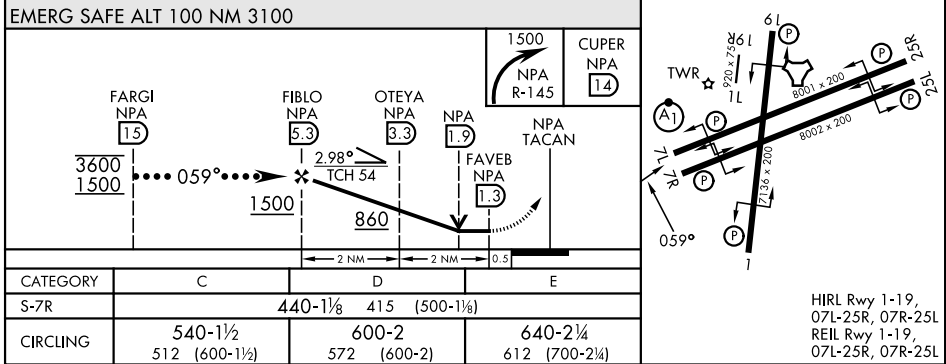
[USN] PENSACOLA NAS (FORREST SHERMAN FLD) (KNPA)

RADAR required ▼	MISSED APPROACH: Climbing right turn to 1500 via NPA TACAN R-145 to CUPER and hold.
---------------------	---

ATIS 124.35 266.8	PENSACOLA APP CON 120.65 270.8	SHERMAN TOWER 120.7 340.2	GND CON 121.7 336.4	ASR/ PAR
----------------------	-----------------------------------	------------------------------	------------------------	-------------



ELEV	28	TDZE	25
------	----	------	----



PENSACOLA, FLORIDA 30°21'N-87°19'W PENSACOLA NAS (FORREST SHERMAN FLD) (KNPA)

Amdt 1 12JUN25

HI-TACAN Z RWY 7R

SE-3, 19 MAR 2026 to 16 APR 2026

SE-3, 19 MAR 2026 to 16 APR 2026