

HI-VOR Z RWY 19

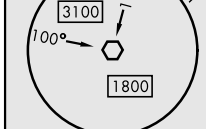
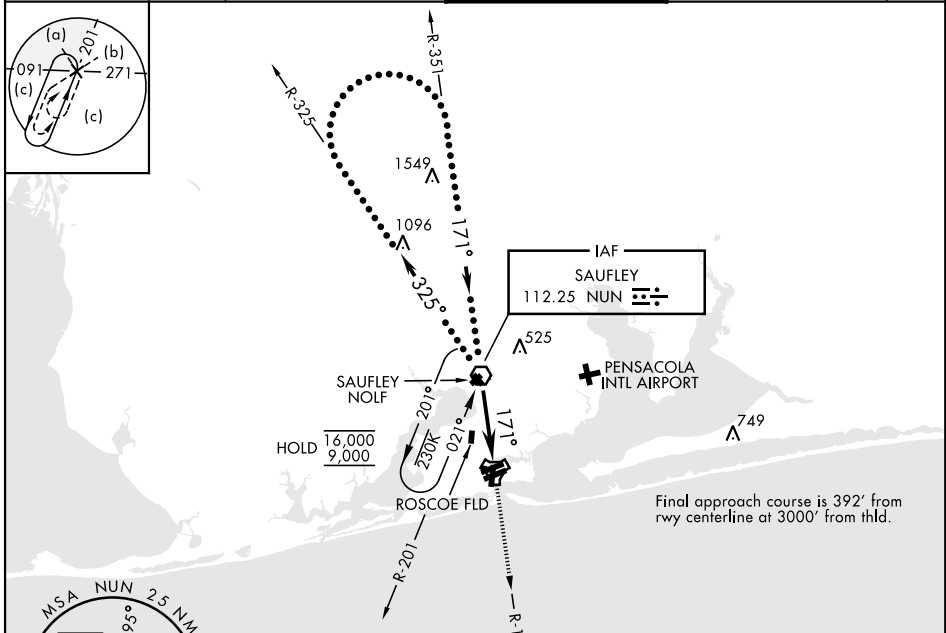
VOR NUN 112.25	APCH CRS 171°	Rwy Idg 7136 TDZE 22 Arprt Elev 28	[USN]	PENSACOLA NAS (FORREST SHERMAN FLD) (KNPA)
--------------------------	-------------------------	---	-------	--

RADAR required

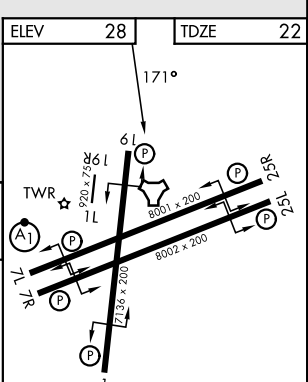
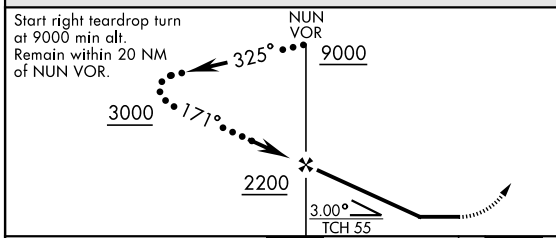
Procedure not available when Pensacola South Military Operating Area (MOA) is active.

MISSED APPROACH: Climb to 2000 via NUN VOR R-171. Expect RADAR vectors within 3 NM of MAP.

ATIS 124.35 266.8	PENSACOLA APP CON 120.65 270.8	SHERMAN TOWER 120.7 340.2	GND CON 121.7 336.4	ASR/PAR
-----------------------------	--	-------------------------------------	-------------------------------	---------



EMERG SAFE ALT 100 NM 3100



HIRL Rwy 1-19, 07L-25R, 07R-25L
REIL Rwy 1-19, 07L-25R, 07R-25L

CATEGORY	C	D	E	FAF to MAP 6.0 NM					
				Knots	120	140	160	180	200
S-19	540-1 $\frac{1}{8}$	518 (600-1 $\frac{1}{8}$)		Min:Sec	3:00	2:34	2:15	2:00	1:48
CIRCLING	540-1 $\frac{1}{2}$ 512 (600-1 $\frac{1}{2}$)	600-2 572 (600-2)	640-2 $\frac{1}{4}$ 612 (700-2 $\frac{1}{4}$)						

HI-VOR Z RWY 19

SE-3, 19 MAR 2026 to 16 APR 2026

SE-3, 19 MAR 2026 to 16 APR 2026